

VWR Lab Essentials: Precision Solutions for Scientific Excellence

01. LIQUID HANDLING

02. CELL CULTURE &
PLASTICWARE

03. GLASSWARE



We set science in motion to create a better world

Avantor® is a trusted single source for the broadest range of quality products and service solutions as well as the collaboration and expertise your customers need to accelerate innovation throughout the discovery-to-delivery process. Our products are offered through Avantor's VWR sales channel and our global eCommerce and ERP purchasing platform, ensuring seamless fulfillment worldwide, wherever they are, whatever they need.

SOLUTIONS WE DELIVER

- Materials & consumables
- Equipment & instrumentation
- Services

HOW WE DELIVER THEM

- People
- Technology platforms

6M 
PRODUCTS

12k

 **ASSOCIATES**
across the globe

4k 
CORE LABORATORY
product suppliers

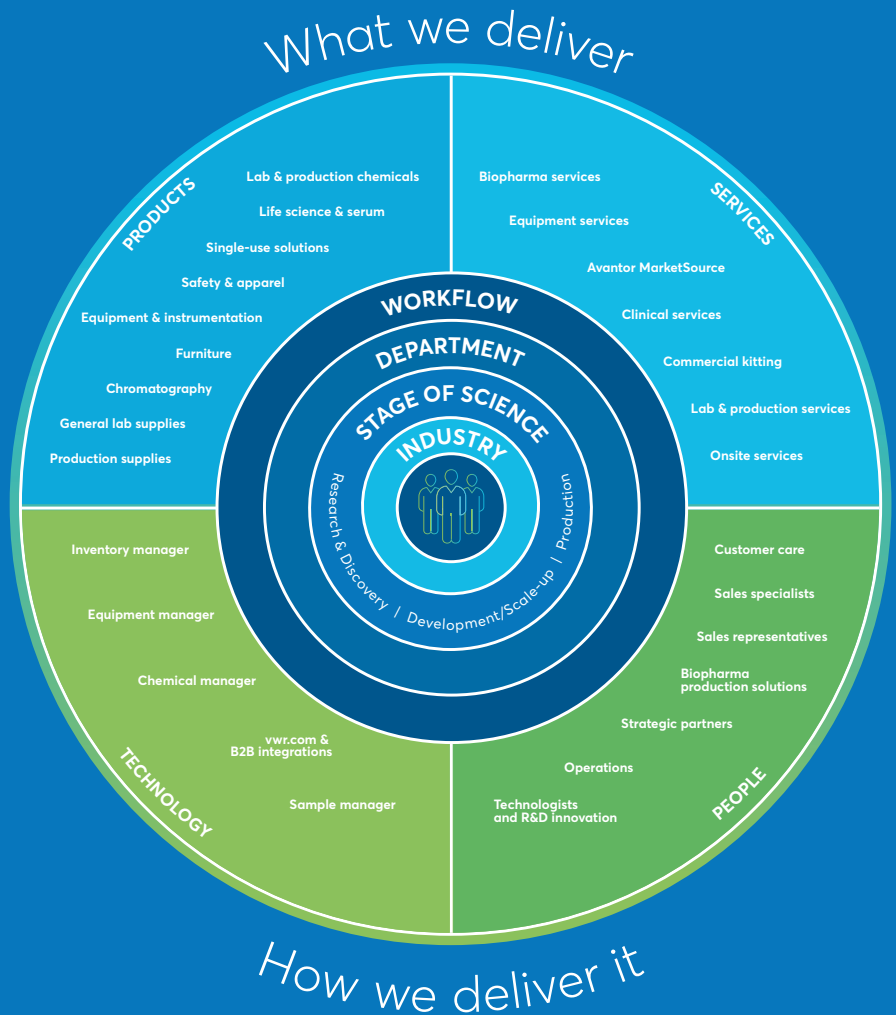


Table of contents

01

VWR® SOLUTIONS FOR LIQUID HANDLING

PHP Pipettes
Micro Pipettes
Tips
Tubes and Reservoir

Pages 4-15

02

VWR® SOLUTIONS FOR CELL CULTURE

Tissue culture flask
Multi well plates
Media bottle
Serological pipette
PHP plates

Pages 16-27

03

VWR® SOLUTIONS GLASSWARE

Bottles and Flasks
Pipettes
Cylinders

Pages 28-33



VWR® solutions for liquid handling

WELCOME TO THE VWR® BRANDED RANGE OF PRODUCTS FOR LIQUID HANDLING

One of the key strengths of VWR's liquid handling capabilities lies in our diverse portfolio of high-quality instruments and consumables. We offer a wide selection of pipettes, tips, tubes, reservoir and automated systems, catering to various volumes, sample types, and application requirements.

Our team of technical experts works closely with customers to understand their specific needs and challenges, offering consultation, customization, and integration services.

We can help optimize your liquid handling workflows, streamline processes, and enhance productivity in your laboratory or production facility.

We are proud to support you in your aim to explore new frontiers.

Your VWR Life Science Team



**VWR®, PHP PIPETTES (PRECISE HIGH PERFORMANCE)
SINGLE & MULTI CHANNEL PIPETTES, MECHANICAL,
PRECISE HIGH PERFORMANCE (PHP) MICRO PIPETTE**

Key features:

- Magnet assisted piston for consistently precise results
- Innovative spring and seal design for one of the lowest plunge force requirement
- Durable tip ejector made using special corrosion resistant alloy, protecting against chemical & physical corrosion
- Effortless tip ejection with unique shock absorbing mechanism
- Spring loaded tip cone for lesser strain & proper tip fitment for precise pipetting (for Multi-Channel only)
- Fully Autoclavable
- Ergonomic design with proper weight distribution
- Calibrated as per ISO 8655-6 in ISO 17025 accredited lab
- Large and clear 4 digit display
- Color coding for easy identification
- Easy cleaning & in-house calibration
- Highly durable PVDF tip cone
- 3-Year warranty



Ordering information:

| Description | UOM | Cat. No. |
|--|----------|--------------|
| PHP - Single Channel VV VV Pipette 0.1-2.5 µl | 1*1 item | VWRA613-6688 |
| PHP - Single Channel VV Pipette 0.5-10 µl | 1*1 item | VWRA613-6689 |
| PHP - Single Channel VV Pipette 2-20 µl | 1*1 item | VWRA613-6690 |
| PHP - Single Channel VV Pipette 5-50 µl | 1*1 item | VWRA613-6691 |
| PHP - Single Channel VV Pipette 10-100 µl | 1*1 item | VWRA613-6692 |
| PHP - Single Channel VV Pipette 20-200 µl | 1*1 item | VWRA613-6693 |
| PHP - Single Channel VV Pipette 100-1000 µl | 1*1 item | VWRA613-6694 |
| PHP - Single Channel VV Pipette 1000-5000 µl | 1*1 item | VWRA613-6695 |
| PHP - Single Channel VV Pipette 1000-10000 µl | 1*1 item | VWRA613-6696 |
| PHP - Single Channel Fix Volume Pipette 2.5 µl | 1*1 item | VWRA613-6697 |
| PHP - Single Channel Fix Volume Pipette 5 µl | 1*1 item | VWRA613-6698 |
| PHP - Single Channel Fix Volume Pipette 10 µl | 1*1 item | VWRA613-6699 |
| PHP - Single Channel Fix Volume Pipette 20 µl | 1*1 item | VWRA613-6700 |
| PHP - Single Channel Fix Volume Pipette 25 µl | 1*1 item | VWRA613-6701 |
| PHP - Single Channel Fix Volume Pipette 50 µl | 1*1 item | VWRA613-6702 |
| PHP - Single Channel Fix Volume Pipette 100 µl | 1*1 item | VWRA613-6703 |
| PHP - Single Channel Fix Volume Pipette 200 µl | 1*1 item | VWRA613-6704 |
| PHP - Single Channel Fix Volume Pipette 250 µl | 1*1 item | VWRA613-6705 |
| PHP - Single Channel Fix Volume Pipette 500 µl | 1*1 item | VWRA613-6706 |

| Description | UOM | Cat. No. |
|--|----------|--------------|
| PHP - Single Channel Fix Volume Pipette 1000 µl | 1*1 item | VWRA613-6707 |
| PHP - Single Channel Fix Volume Pipette 2000 µl | 1*1 item | VWRA613-6708 |
| PHP - Single Channel Fix Volume Pipette 5000 µl | 1*1 item | VWRA613-6709 |
| PHP - Single Channel Fix Volume Pipette 10000 µl | 1*1 item | VWRA613-6710 |
| PHP 8 Channel Pipette 0.5 - 10 µl | 1*1 item | VWRA613-6711 |
| PHP 8 Channel Pipette 2 - 20 µl | 1*1 item | VWRA613-6712 |
| PHP 8 Channel Pipette 5 - 50 µl | 1*1 item | VWRA613-6713 |
| PHP 8 Channel Pipette 10 - 100 µl | 1*1 item | VWRA613-6714 |
| PHP 8 Channel Pipette 20 - 200 µl | 1*1 item | VWRA613-6715 |
| PHP 8 Channel Pipette 30 - 300 µl | 1*1 item | VWRA613-6716 |
| PHP 12 Channel Pipette 0.5 - 10 µl | 1*1 item | VWRA613-6717 |
| PHP 12 Channel Pipette 2 - 20 µl | 1*1 item | VWRA613-6718 |
| PHP 12 Channel Pipette 5 - 50 µl | 1*1 item | VWRA613-6719 |
| PHP 12 Channel Pipette 10 - 100 µl | 1*1 item | VWRA613-6720 |
| PHP 12 Channel Pipette 20 - 200 µl | 1*1 item | VWRA613-6721 |
| PHP 12 Channel Pipette 30 - 300 µl | 1*1 item | VWRA613-6722 |
| PHP Carousel stand for 6 Pipettes | 1*1 item | VWRA613-6723 |
| PHP Shelf mounting stand for Pipette | 1*1 item | VWRA613-6724 |



A- SERIES PIPETTES

FULLY AUTOCLAVABLECLICK STOP COUNTER SYSTEM FOR CONVENIENT VOLUME SETTING; ERGONOMIC DESIGN ENSURING LIGHT WEIGHT & SOFT PLUNGER MOVEMENT

Key features:

- Durable tip cone made of PVDF offers the highest resistance to physical shocks as well as to chemical corrosion and is compatible with most types of tips
- Calibrated as per ISO 8655-6 in ISO 17025 accredited lab
- 1-Year warranty



Ordering information:

| Description | UOM | Cat. No. |
|--|-----------|--------------|
| Fully Auto Var Volume Micropipette 0.5-10 µl | 1*1 items | VWRA613-6591 |
| Fully Auto Var Volume Micropipette 5-50 µl | 1*1 items | VWRA613-6592 |
| Fully Auto Var Volume Micropipette 50-200 µl | 1*1 items | VWRA613-6593 |
| Fully Auto Var Volume Pipette 200-1000 µl | 1*1 items | VWRA613-6594 |
| Fully Auto Var Volume Micropipette 10-100 µl | 1*1 items | VWRA613-6595 |
| Fully Auto Var Volume Pipette 100-1000 µl | 1*1 items | VWRA613-6596 |
| Fully Auto Var Volume Micropipette 2-20 µl | 1*1 items | VWRA613-6597 |
| Fully Auto Var Volume Micropipette 20-200 µl | 1*1 items | VWRA613-6598 |
| Fully Auto Var Volume Pipette 1000-5000 µl | 1*1 items | VWRA613-6599 |
| Fully Auto Var Volume Pipette 500-5000 µl | 1*1 items | VWRA613-6600 |
| Fully Auto Var Volume Pipette 1000-10000 µl | 1*1 items | VWRA613-6601 |
| Fully Auto Var Volume Pipette 500-10000 µl | 1*1 items | VWRA613-6602 |
| Fully Auto Fix Volume Micropipette 5 µl | 1*1 items | VWRA613-6603 |
| Fully Auto Fix Volume Micropipette 10 µl | 1*1 items | VWRA613-6604 |
| Fully Auto Fix Volume Micropipette 20 µl | 1*1 items | VWRA613-6605 |
| Fully Auto Fix Volume Micropipette 25µl | 1*1 items | VWRA613-6606 |
| Fully Auto Fix Volume Micropipette 50 µl | 1*1 items | VWRA613-6607 |
| Fully Auto Fix Volume Micropipette 100 µl | 1*1 items | VWRA613-6608 |

| Description | UOM | Cat. No. |
|---|-----------|--------------|
| Fully Auto Fix Volume Micropipette 200 µl | 1*1 items | VWRA613-6609 |
| Fully Auto Fix Volume Micropipette 250 µl | 1*1 items | VWRA613-6610 |
| Fully Auto Fix Volume Micropipette 500 µl | 1*1 items | VWRA613-6611 |
| Fully Auto Fix Volume Micropipette 1000 µl | 1*1 items | VWRA613-6612 |
| Fully Auto Fix Volume Micropipette 2000 µl | 1*1 items | VWRA613-6613 |
| Fully Auto Fix Volume Micropipette 5000 µl | 1*1 items | VWRA613-6614 |
| Fully Auto Fix Volume Micropipette 10000 µl | 1*1 items | VWRA613-6615 |
| Fully Auto 8 Ch Micropipette 5 - 50 µl | 1*1 items | VWRA613-6616 |
| Fully Auto 8 Ch Micropipette 10 - 100 µl | 1*1 items | VWRA613-6617 |
| Fully Auto 8 Ch Micropipette 20 - 200 µl | 1*1 items | VWRA613-6618 |
| Fully Auto 8 Ch Micropipette 30 - 300 µl | 1*1 items | VWRA613-6619 |
| Fully Auto 8 Ch Micropipette 0.5 - 10 µl | 1*1 items | VWRA613-6620 |
| Fully Auto 12 Ch Micropipette 5 - 50 µl | 1*1 items | VWRA613-6621 |
| Fully Auto 12 Ch Pipette 10 - 100 µl | 1*1 items | VWRA613-6622 |
| Fully Auto 12 Ch Pipette 20 - 200 µl | 1*1 items | VWRA613-6623 |
| Fully Auto 12 Ch Pipette 30 - 300 µl | 1*1 items | VWRA613-6624 |
| Fully Auto 12 Ch Pipette 0.5 - 10 µl | 1*1 items | VWRA613-6625 |

VWR®, ELECTRONIC PIPETTE, CLASSIC

PRECISE 3 POINT CALIBRATED ELECTRONIC PIPETTES WITH 5 DIFFERENT LIQUID HANDLING MODES

Key features:

Intuitive graphical interface makes it operationally easy to use.

- Lightweight construction makes pipetting effortless and pain-free even after extensive usage
- Auto-sensing magnetic piston for precise pipetting; State-of-the-art stepper motor for long lasting performance
- 5 different pipetting modes for all pipetting needs in a lab: Forward pipetting, Reverse pipetting, Multi dispensing, Mixing, Diluting
- Calibrated as per ISO 8655-6 standards in ISO 17025 accredited lab; 3 point auto-calibration provides most accurate and precise delivery of liquid throughout the volume range
- Ultra-efficient battery allows 5 hours of continuous usage after every full recharge; Intelligent sleep mode conserves battery when not in use
- A smart charging stand which can be used for charging or to rest the pipette when not in use
- Min Vol - 0.5 µl & Max Vol - 5,000 µl



Ordering information:

| Description | UOM | Cat. No. |
|--|----------|--------------|
| Electronic Pipette Single Ch 0.5-10 µl | 1*1 item | VWRA613-6671 |
| Electronic Pipette Single Ch 5-100 µl | 1*1 item | VWRA613-6672 |
| Electronic Pipette Single Ch 10-200 µl | 1*1 item | VWRA613-6673 |
| Electronic Pipette Single Ch 50-1000 µl | 1*1 item | VWRA613-6674 |
| Electronic Pipette Single Ch 250-5000 µl | 1*1 item | VWRA613-6675 |
| Electronic Pipette 8 Channel 0.5-10 µl | 1*1 item | VWRA613-6676 |
| Electronic Pipette 8 Channel 2-20 µl | 1*1 item | VWRA613-6677 |
| Electronic Pipette 8 Channel 5-100 µl | 1*1 item | VWRA613-6678 |
| Electronic Pipette 8 Channel 10-200 µl | 1*1 item | VWRA613-6679 |

| Description | UOM | Cat. No. |
|---|----------|--------------|
| Electronic Pipette 8 Channel 15-300 µl | 1*1 item | VWRA613-6680 |
| Electronic Pipette 12 Channel 0.5-10 µl | 1*1 item | VWRA613-6681 |
| Electronic Pipette 12 Channel 2-20 µl | 1*1 item | VWRA613-6682 |
| Electronic Pipette 12 Channel 5-100 µl | 1*1 item | VWRA613-6683 |
| Electronic Pipette 12 Channel 10-200 µl | 1*1 item | VWRA613-6684 |
| Electronic Pipette 12 Channel 15-300 µl | 1*1 item | VWRA613-6685 |
| Electronic Pipette Charging Stand | 1*1 item | VWRA613-6686 |
| Acrylic Stand for Electronic Pipette | 1*1 item | VWRA613-6687 |

VWR®, PIPETTE TIPS

DNase, RNase ENDO TOXIN FREE PRECISE SHAPED TIPS TO SUIT MOST SENSITIVE PIPETTING APPLICATIONS IN LAB

Key features:

- Highly transparent tips, produced through high quality diamond finish mould and special FDA approved medical grade virgin Polypropylene
- Innovative design for compatibility with a range of pipettes, ensuring minimum force requirement during loading and ejection
- Ideal match for high sensitive PCR works
- Produced in a fully automatic, human touch free, clean room production facility
- Free from RNase, DNase, Human DNA, Pyrogen & PCR inhibitor. Free of Lubricants and heavy metals
- Graduation marks on all the tips that act as visual checks to minimize any risk of errors during sample spiration
- All these high quality tips are also available as sterile



BULK TIPS

- Packed in easily tearable Polyethylene self standing bag for ease of handling
- Double sealing through perforation and zip-lock for better protection against contamination and spillage



Ordering information:

Bulk Pack

| Description | UOM | Cat. No. |
|----------------------------------|--------------|--------------|
| 10 µl uni Grad Bulk tip | 1*1000 items | VWRA612-6332 |
| 10 µl Long uni Grad tip | 1*1000 items | VWRA612-6388 |
| 200 µl uni Grad tip | 1*1000 items | VWRA612-6478 |
| 200 µl Long uni Grad tip, 300 µl | 1*1000 items | VWRA612-6509 |
| 1000 µl uni Grad tip | 1*1000 items | VWRA612-6526 |
| 1250 µl uni Grad tip | 1*500 items | VWRA612-6577 |

Sterile Bulk Pack

| Description | UOM | Cat. No. |
|--|--------------|--------------|
| 10 µl uni Grad tip, Sterile | 1*1000 items | VWRA612-6333 |
| 10 µl Long uni Grad tip, Sterile | 1*1000 items | VWRA612-6389 |
| 10 µl Narrow uni Grad tip | 1*1000 items | VWRA612-6409 |
| 10 µl Narrow uni Grad tip, 20µl, Sterile | 1*1000 items | VWRA612-6414 |
| 200 µl uni Grad tip, Sterile | 1*1000 items | VWRA612-6479 |
| 200 µl Long uni Gr tip, 300 µl, Sterile | 1*1000 items | VWRA612-6511 |
| 1000 µl uni Grad tip, Sterile | 1*1000 items | VWRA612-6529 |
| 1250 µl uni Grad tip, Sterile | 1*500 items | VWRA612-6213 |

RACKED TIPS

- Fully autoclavable & stackable
- Hinge rack for single hand operation
- Sturdy and solid design for long durability
- Color coded tray for easy identification



Ordering information:

Racked Tips

| Description | UOM | Cat. No. |
|----------------------------------|-------------|--------------|
| 10 µl uni Grad tip | 1*960 items | VWRA612-6354 |
| 10 µl Long uni Grad tip | 1*960 items | VWRA612-6403 |
| 10 µl Narrow uni Grad tip | 1*960 items | VWRA612-6424 |
| 200 µl uni Grad tip | 1*960 items | VWRA612-6486 |
| 200 µl Long uni Grad tip, 300 µl | 1*960 items | VWRA612-6514 |
| 1000 µl uni Grad tip | 1*576 items | VWRA612-6534 |
| 1250 µl uni Grad tip | 1*576 items | VWRA612-6579 |

Sterile Racked Tips

| Description | UOM | Cat. No. |
|--|-------------|--------------|
| 10 µl uni Grad tip, Sterile | 1*960 items | VWRA612-6370 |
| 10 µl Long uni Grad tip, Sterile | 1*960 items | VWRA612-6404 |
| 10 µl Narrow uni Grad tip, 20µl, Sterile | 1*960 items | VWRA612-6432 |
| 200 µl uni Grad tip, Sterile | 1*960 items | VWRA612-6488 |
| 200 µl Long uni Gr tip, 300 µl, Sterile | 1*960 items | VWRA612-6520 |
| 1000 µl uni Grad tip, Sterile | 1*576 items | VWRA612-6536 |
| 1250 µl uni Grad tip, Sterile | 1*576 items | VWRA612-6220 |

STERILE LOW RETENTION TIPS

Specially developed resins combined with high quality diamond finish mould creates super hydrophobic internal surface which ensures maximum recovery of sample yield

- Minimum retention = Maximum accuracy
- No Silicon additives = No leaching



Ordering information:

Sterile Low-retention Bulk

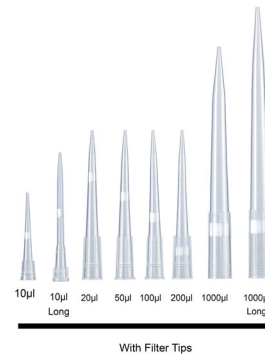
| Description | UOM | Cat. No. |
|--|--------------|--------------|
| 10 µl uni Grad tip, Sterile, LR | 1*1000 items | VWRA612-6339 |
| 10 µl Long uni Grad tip, Sterile, LR | 1*1000 items | VWRA612-6122 |
| 10 µl Narrow uni Gr tip, 20µl, Sterile, LR | 1*1000 items | VWRA612-6128 |
| 200 µl uni Grad tip, Sterile, LR | 1*1000 items | VWRA612-6483 |
| 200 µl Long uni Gr tip, 300 µl, Sterile LR | 1*1000 items | VWRA612-6184 |
| 1000 µl uni Grad tip, Sterile, LR | 1*1000 items | VWRA612-6194 |
| 1250 µl uni Grad tip, Sterile, LR | 1*500 items | VWRA612-6282 |

Sterile Low-retention Racked

| Description | UOM | Cat. No. |
|--|-------------|--------------|
| 10 µl uni Grad tip, Sterile, LR | 1*960 items | VWRA612-6372 |
| 10 µl Long uni Grad tip, Sterile, LR | 1*960 items | VWRA612-6124 |
| 10 µl Narrow uni Gr tip, 20µl, Sterile, LR | 1*960 items | VWRA612-6137 |
| 200 µl uni Grad tip, Sterile, LR | 1*960 items | VWRA612-6491 |
| 200 µl Long uni Gr tip, 300ul, Sterile, LR | 1*960 items | VWRA612-6190 |
| 1000 µl uni Grad tip, Sterile, LR | 1*576 items | VWRA612-6196 |
| 1250 µl uni Grad tip, Sterile, LR | 1*576 items | VWRA612-6291 |

FILTER BULK TIPS

- Specially developed PE filters for pipetting application
- The filter serves as a barrier against aerosols formed during pipetting
- Filter tips protect the pipette shafts from contamination and reduce the risk of cross-contamination and faulty measuring results



Ordering information:

Filter Bulk

| Description | UOM | Cat. No. |
|--|--------------|--------------|
| 10 µl uni Grad tip, Filter | 1*1000 items | VWRA612-6334 |
| 10 µl Long uni Grad tip, Filter | 1*1000 items | VWRA612-6399 |
| 10 µl Narrow uni Grad tip, 20 µl, Filter | 1*1000 items | VWRA612-6419 |
| 20 µl uni Grad tip, Filter | 1*1000 items | VWRA612-6458 |
| 50 µl uni Grad tip, Filter | 1*1000 items | VWRA612-6464 |
| 100 µl uni Grad tip, Filter | 1*1000 items | VWRA612-6470 |
| 200 µl uni Grad tip, Filter | 1*1000 items | VWRA612-6481 |
| 200 µl Long uni Grad tip, 300 µl, Filter | 1*1000 items | VWRA612-6513 |
| 1000 µl uni Grad tip, Filter | 1*1000 items | VWRA612-6531 |
| 1250 µl uni Grad tip, Filter | 1*500 items | VWRA612-6214 |

Sterile Filter Bulk

| Description | UOM | Cat. No. |
|--|--------------|--------------|
| 10 µl uni Grad tip, Sterile, Filter | 1*1000 items | VWRA612-6348 |
| 10 µl Long uni Grad tip Sterile, Filter | 1*1000 items | VWRA612-6123 |
| 10 µl Narrow uni Grad tip, 20µl, Sterile, Filter | 1*1000 items | VWRA612-6129 |
| 20 µl uni Grad tip, Sterile, Filter | 1*1000 items | VWRA612-6459 |
| 50 µl uni Grad tip, Sterile, Filter | 1*1000 items | VWRA612-6465 |
| 100 µl uni Grad tip, Sterile, Filter | 1*1000 items | VWRA612-6471 |
| 200 µl uni Grad tip, Sterile, Filter | 1*1000 items | VWRA612-6484 |
| 200 µl Long uni Gr tip, 300 µl, Sterile, Filter | 1*1000 items | VWRA612-6189 |
| 1000 µl uni Grad tip, Sterile, Filter | 1*1000 items | VWRA612-6195 |
| 1250 µl uni Grad tip, Sterile, Filter | 1*500 items | VWRA612-6283 |

FILTER RACKED TIPS

Made of US FDA approved virgin Poly Propylene. Especially designed PE filter to prevent cross contamination. Rack tips support hands-free tip fitting.



Ordering information:

Filter racked Tips

| Description | UOM | Cat. No. |
|--|-------------|--------------|
| 10 µl uni Grad tip, Filter | 1*960 items | VWRA612-6371 |
| 10 µl Long uni Grad tip, Filter | 1*960 items | VWRA612-6405 |
| 10 µl Narrow uni Grad tip, 20 µl, Filter | 1*960 items | VWRA612-6433 |
| 20 µl uni Grad tip, Filter | 1*960 items | VWRA612-6460 |
| 50 µl uni Grad tip, Filter | 1*960 items | VWRA612-6466 |
| 100 µl uni Grad tip, Filter | 1*960 items | VWRA612-6472 |
| 200 µl uni Grad tip, Filter | 1*960 items | VWRA612-6489 |
| 200 µl Long uni Grad tip, 300 µl, Filter | 1*960 items | VWRA612-6521 |
| 1000 µl uni Grad tip, Filter | 1*576 items | VWRA612-6539 |
| 1250 µl uni Grad tip, Filter | 1*576 items | VWRA612-6221 |

Sterile Filter Racked

| Description | UOM | Cat. No. |
|---|-------------|--------------|
| 10 µl uni Grad tip, Sterile, Filter | 1*960 items | VWRA612-6373 |
| 10 µl Long uni Grad tip, Sterile, Filter | 1*960 items | VWRA612-6125 |
| 10 µl Narrow uni Gr tip, 20 µl, Sterile, Filter | 1*960 items | VWRA612-6138 |
| 20 µl uni Grad tip, Sterile, Filter | 1*960 items | VWRA612-6461 |
| 50 µl uni Grad tip, Sterile, Filter | 1*960 items | VWRA612-6467 |
| 100 µl uni Grad tip, Sterile, Filter | 1*960 items | VWRA612-6473 |
| 200 µl uni Grad tip, Sterile, Filter | 1*960 items | VWRA612-6493 |
| 200 µl Long uni Gr tip, 300 µl, Sterile, Filter | 1*960 items | VWRA612-6191 |
| 1000 µl uni Grad tip, Sterile, Filter | 1*576 items | VWRA612-6197 |
| 1250 µl uni Grad tip, Sterile, Filter | 1*576 items | VWRA612-6292 |

STERILE LOW-RETENTION FILTER TIPS

- Made of US FDA approved virgin PolyPropylene
- Especially designed PE filter to prevent cross contamination
- Racked tips support hands-free tip fitting
- Each tips are hydrophobic for lowest retention of liquid



Ordering information:

Sterile Low-retention Filter Bulk

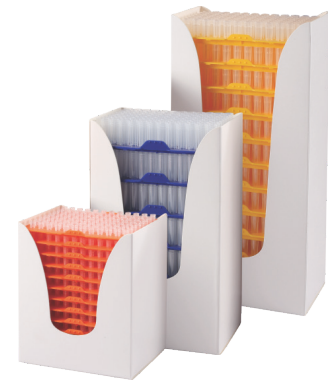
| Description | UOM | Cat. No. |
|---|--------------|--------------|
| 10 µl Long uni Gr tip Sterile, LR, Filter | 1*1000 items | VWRA612-6246 |
| 10 µl Narrow uni Gr tip st, LR, Filter | 1*1000 items | VWRA612-6249 |
| 20 µl uni Grad tip, Sterile, LR, Filter | 1*1000 items | VWRA612-6143 |
| 50 µl uni Grad tip, Sterile, LR, Filter | 1*1000 items | VWRA612-6149 |
| 100 µl uni Grad tip, Sterile, LR, Filter | 1*1000 items | VWRA612-6173 |
| 200 µl uni Grad tip, Sterile, LR, Filter | 1*1000 items | VWRA612-6178 |
| 200 µl Long uni Gr tip, 300 µl, Sterile, LR, Filter | 1*1000 items | VWRA612-6262 |
| 1000 µl uni Grad tip, Sterile, LR, Filter | 1*1000 items | VWRA612-6270 |
| 1250 µl uni Grad tip, Sterile, LR, Filter | 1*500 items | VWRA612-6284 |

Sterile Low-retention Filter Racked

| Description | UOM | Cat. No. |
|--|-------------|--------------|
| 10 µl uni Grad tip, Sterile, LR, Filter | 1*960 items | VWRA612-6119 |
| 10 µl Long uni Gr tip, Sterile, LR, Filter | 1*960 items | VWRA612-6247 |
| 10 µl Narrow uni Gr tip, Sterile, LR, Filter | 1*960 items | VWRA612-6260 |
| 20 µl uni Grad tip, Sterile, LR, Filter | 1*960 items | VWRA612-6144 |
| 50 µl uni Grad tip, Sterile, LR, Filter | 1*960 items | VWRA612-6159 |
| 100 µl uni Grad tip, Sterile, LR, Filter | 1*960 items | VWRA612-6174 |
| 200 µl uni Grad tip, Sterile, LR, Filter | 1*960 items | VWRA612-6179 |
| 200 µl Long uni Gr tip 300 µl, Sterile, LR, Filter | 1*960 items | VWRA612-6263 |
| 1000 µl uni Grad tip, Sterile, LR, Filter Rack | 1*576 items | VWRA612-6272 |
| 1250 µl uni Grad tip, Sterile, LR, Filter | 1*576 items | VWRA612-6293 |

RELOADABLE TIPS:

- Readily arrange tips for refilling in the rack
- Time saving & cost saving option
- Available in all variance – filter, non filter, sterile, non sterile and low-retention



Ordering information:

Reloadable Tips

| Description | UOM | Cat. No. |
|----------------------------------|-------------|--------------|
| 10 µl uni Grad tip | 1*960 items | VWRA612-6380 |
| 10 µl Long uni Grad tip | 1*960 items | VWRA612-6406 |
| 10 µl Narrow uni Grad tip | 1*960 items | VWRA612-6434 |
| 200 µl uni Grad tip | 1*960 items | VWRA612-6494 |
| 200 µl Long uni Grad tip, 300 µl | 1*960 items | VWRA612-6522 |
| 1000 µl uni Grad tip | 1*576 items | VWRA612-6544 |
| 1250 µl uni Grad tip | 1*576 items | VWRA612-6580 |

Reloadable Filter Tips

| Description | UOM | Cat. No. |
|--|-------------|--------------|
| 10 µl uni Grad tip, Filter | 1*960 items | VWRA612-6383 |
| 10 µl Long uni Grad tip, Filter | 1*960 items | VWRA612-6408 |
| 10 µl Narrow uni Grad tip, Filter | 1*960 items | VWRA612-6443 |
| 20 µl uni Grad tip, Filter | 1*960 items | VWRA612-6462 |
| 50 µl uni Grad tip, Filter | 1*960 items | VWRA612-6468 |
| 100 µl uni Grad tip, Filter | 1*960 items | VWRA612-6474 |
| 200 µl uni Grad tip, Filter | 1*960 items | VWRA612-6503 |
| 200 µl Long uni Grad tip, 300 µl, Filter | 1*960 items | VWRA612-6524 |
| 1000 µl uni Grad tip, Filter | 1*480 items | VWRA612-6553 |
| 1250 µl uni Grad tip, Filter | 1*576 items | VWRA612-6223 |

Reloadable Sterile Tips

| Description | UOM | Cat. No. |
|---|-------------|--------------|
| 10 µl uni Grad tip, Sterile | 1*960 items | VWRA612-6381 |
| 10 µl Long uni Grad tip, Sterile | 1*960 items | VWRA612-6407 |
| 10 µl Narrow uni Grad tip, Sterile | 1*960 items | VWRA612-6442 |
| 200 µl uni Grad tip, Sterile | 1*960 items | VWRA612-6496 |
| 200 µl Long uni Grad tip, 300 µl, Sterile | 1*960 items | VWRA612-6523 |
| 1000 µl uni Grad tip, Sterile | 1*480 items | VWRA612-6552 |
| 1250 µl uni Grad tip, Sterile | 1*576 items | VWRA612-6222 |

Reloadable Sterile Filter Tips

| Description | UOM | Cat. No. |
|---|-------------|--------------|
| 10 µl uni Grad tip, Sterile, Filter | 1*960 items | VWRA612-6384 |
| 10 µl Long uni Grad tip, Sterile, Filter | 1*960 items | VWRA612-6127 |
| 10 µl Narrow uni Gr tip, Sterile, Filter | 1*960 items | VWRA612-6142 |
| 20 µl uni Grad tip, Sterile, Filter | 1*960 items | VWRA612-6463 |
| 50 µl uni Grad tip, Sterile, Filter | 1*960 items | VWRA612-6469 |
| 100 µl uni Grad tip, Sterile, Filter | 1*960 items | VWRA612-6476 |
| 200 µl uni Grad tip, Sterile, Filter | 1*960 items | VWRA612-6504 |
| 200 µl Long uni Gr tip, 300 µl, Sterile, Filter | 1*960 items | VWRA612-6193 |
| 1000 µl uni Grad tip, Sterile, Filter | 1*576 items | VWRA612-6199 |
| 1250 µl uni Grad tip, Sterile, Filter | 1*576 items | VWRA612-6318 |

Reloadable Sterile Low-retention Tips

| Description | UOM | Cat. No. |
|---|-------------|--------------|
| 10 µl uni Grad tip, Sterile, LR | 1*960 items | VWRA612-6382 |
| 10 µl Long uni Grad tip, Sterile, LR | 1*960 items | VWRA612-6126 |
| 10 µl Narrow uni Grad tip, Sterile, LR | 1*960 items | VWRA612-6139 |
| 200 µl uni Grad tip, Sterile, LR | 1*960 items | VWRA612-6499 |
| 200 µl Long uni Gr tip, 300 µl, Sterile, LR | 1*960 items | VWRA612-6192 |
| 1000 µl uni Grad tip, Sterile, LR | 1*480 items | VWRA612-6198 |
| 1250 µl uni Grad tip, Sterile, LR | 1*576 items | VWRA612-6294 |

Sterile Low Retention Filter Reloadable Tips

| Description | UOM | Cat. No. |
|---|-------------|--------------|
| 10 µl uni Grad tip, Sterile, LR, Filter | 1*960 items | VWRA612-6121 |
| 10 µl Long uni Grad tip, st, LR, Filter | 1*960 items | VWRA612-6248 |
| 10 µl Narrow uni Grad tip, st, LR, Filter | 1*960 items | VWRA612-6261 |
| 20 µl uni Grad tip, Sterile, LR, Filter | 1*960 items | VWRA612-6148 |
| 50 µl uni Grad tip, Sterile, LR, Filter | 1*960 items | VWRA612-6172 |
| 100 µl uni Grad tip, Sterile, LR, Filter | 1*960 items | VWRA612-6177 |
| 200 µl uni Grad tip, Sterile, LR, Filter | 1*960 items | VWRA612-6182 |
| 200 µl Long uni Grad tip, 300 µl, Sterile, LR, Filter | 1*960 items | VWRA612-6264 |
| 1000 µl uni Grad tip, Sterile, LR, Filter | 1*576 items | VWRA612-6274 |
| 1250 µl uni Grad tip, Sterile, LR, Filter | 1*576 items | VWRA612-6319 |

Individually Wrapped

| Description | UOM | Cat. No. |
|--|-------------|--------------|
| 200 µl uni Grad tip, Sterile (IW) | 1*400 items | VWRA612-6506 |
| 200 µl uni Grad tip, Sterile, LR (IW) | 1*400 items | VWRA612-6508 |
| 1000 µl uni Grad tip, Sterile (IW) | 1*200 items | VWRA612-6554 |
| 1000 µl uni Grad tip, Sterile, LR (IW) | 1*200 items | VWRA612-6212 |

Macro Tips

| Description | UOM | Cat. No. |
|--|-------------|--------------|
| 5000 µl tip for A & VA-FA series pipette | 1*100 items | VWRA612-6597 |
| 10000 µl tip A & VA-FA series pipette | 1*100 items | VWRA612-6598 |
| 5000 µl tip for Smart 5 ml pipette series | 1*100 items | VWRA612-6599 |
| 10000 µl tip for Smart 10 ml series | 1*100 items | VWRA612-6600 |
| 10000 µl tip for Smart 10 ml series, Sterile | 1*100 items | VWRA612-6660 |

Empty Racks

| Description | UOM | Cat. No. |
|-----------------------------|------------|--------------|
| 10 µl tip rack w/o tips | 1*10 items | VWRA612-6603 |
| 200 µl tip rack w/o tips | 1*10 items | VWRA612-6604 |
| 200 µl XL tip rack w/o tips | 1*10 items | VWRA612-6619 |
| 1000 µl tip rack w/o tips | 1*6 items | VWRA612-6627 |
| 1250 µl tip rack w/o tips | 1*6 items | VWRA612-6224 |

VWR® CLASSIC, MICROCENTRIFUGE TUBES
MICRO CENTRIFUGE TUBE

0.5 ML, 1.7 ML & 2 ML GRADUATED MICRO CENTRIFUGE TUBES

Key features:

- Manufactured using FDA approved resin
- Certified RNase, DNase, DNA and Pyrogen free
- Free from heavy metals
- Can be centrifuged up to 20,000 RCF
- Withstands temperatures from -80 °C to + 121 °C
- Easy-seal cap design for smooth single hand operations
- Transparent surface for hindrance-free spectrophotometer reading
- Thin cap membranes in tubes for trouble free needle piercing
- Flat, frosted lid and larger surface on body for easy marking and labelling



Ordering information:

| Description | UOM | Cat. No. |
|--|-----------|--------------|
| 0.5 ml Micro CT, Natural, Sterile | 1*1 items | VWRA525-1525 |
| 0.5 ml Micro Centrifuge Tube, Amber cl | 1*1 items | VWRA525-1527 |
| 0.5 ml Micro CT, Amber cl, Sterile | 1*1 items | VWRA525-1496 |
| 1.7 ml Micro Centrifuge Tube, Natural | 1*1 items | VWRA525-1528 |
| 1.7 ml Micro CT, Natural, Sterile | 1*1 items | VWRA525-1529 |
| 1.7 ml Micro CT, LR, Sterile | 1*1 items | VWRA525-1497 |

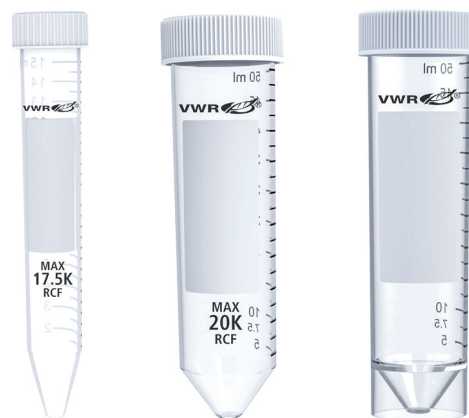
| Description | UOM | Cat. No. |
|--|-----------|--------------|
| 1.7 ml Micro Centrifuge Tube, Amber cl | 1*1 items | VWRA525-1531 |
| 1.7 ml Micro CT, Amber cl, Sterile | 1*1 items | VWRA525-1499 |
| 2.0 ml Micro Centrifuge Tube, Natural | 1*1 items | VWRA525-1532 |
| 2.0 ml Micro CT, Natural, Sterile | 1*1 items | VWRA525-1533 |
| 2.0 ml Micro Centrifuge Tube, Amber cl | 1*1 items | VWRA525-1535 |
| 2.0 ml Micro CT, Amber cl, Sterile | 1*1 items | VWRA525-1523 |

15 ML & 50 ML GRADUATED CENTRIFUGE TUBES

Key features:

Manufactured using FDA approved polypropylene

- Free from RNase, DNase and Pyrogen
- Free from heavy metals
- Clear transparent surface
- Can be centrifuged up to 17000 RCF & 20000 RCF in 15 ml & 50 ml tube respectively
- Leak proof screw cap
- Tamper proof & chemical resistant graduation printing
- Large writing area for sample identification
- High quality amber colored tubes for highly light sensitive sample ensuring no damage to the samples



Ordering information:

| Description | UOM | Cat. No. |
|--|--------------|--------------|
| 15 ml Centrifuge Tube with flat Cap, Bulk | 1* 500 items | VWRA525-1536 |
| 15 ml Centrifuge Tube with flat Cap, Racked | 1* 500 items | VWRA525-1537 |
| 15 ml CT with flat Cap, Sterile, Bulk Sterile | 1* 500 items | VWRA525-1538 |
| 15 ml CT with flat Cap, Sterile, Racked | 1* 500 items | VWRA525-1539 |
| 15 ml CT with flat Cap, Sterile, IW, Individual Wrap | 1* 500 items | VWRA525-1540 |
| 15 ml CT with flat Cap, Amber cl | 1* 500 items | VWRA525-1541 |
| 15 ml CT with flat Cap, Amber cl, Racked | 1* 500 items | VWRA525-1542 |
| 15 ml CT with flat Cap, st, Amber cl | 1* 500 items | VWRA525-1543 |
| 15 ml CT with flat Cap, st, Amber cl | 1* 500 items | VWRA525-1544 |
| 15 ml CT with flat Cap, st, IW, Amber cl, Individually Wrapped | 1* 500 items | VWRA525-1545 |
| 50 ml Centrifuge Tube with flat Cap, Bulk | 1* 500 items | VWRA525-1546 |

| Description | UOM | Cat. No. |
|---|--------------|--------------|
| 50 ml Centrifuge Tube with flat Cap, Racked | 1* 500 items | VWRA525-1547 |
| 50 ml CT with flat Cap, Sterile, Bulk | 1* 500 items | VWRA525-1548 |
| 50 ml CT with flat Cap, Sterile, Racked, | 1* 500 items | VWRA525-1549 |
| 50 ml CT with flat Cap, Sterile, IW, Individually | 1* 500 items | VWRA525-1550 |
| 50 ml CT with flat Cap, Amber cl, Bulk | 1* 500 items | VWRA525-1551 |
| 50 ml CT with flat Cap, Amber cl, Racked | 1* 500 items | VWRA525-1552 |
| 50 ml CT with flat Cap, st, Amber cl, Bulk | 1* 500 items | VWRA525-1553 |
| 50 ml CT with flat Cap, st, Amber cl, Racked | 1* 500 items | VWRA525-1554 |
| 50 ml CT with flat Cap, st, IW, Amber cl, | 1* 500 items | VWRA525-1555 |
| 50 ml Self Standing CT with flat cap, Bulk | 1* 500 items | VWRA525-1556 |
| 50 ml Self Standing CT with flat Cap, st, Sterile, Bulk | 1* 500 items | VWRA525-1557 |

VWR® CLASSIC, CENTRIFUGE TUBES
TRACE METAL FREE CENTRIFUGE TUBE

Key features:

- Less than 1 PPB (Parts Per Billion) heavy metal content
- Manufactured from ultra pure polypropylene raw material
- No common trace metal ensuring low background in samples
- Traceability of the heavy metal is below ICP detection
- Premium quality PE Cap material (Heavy metal free cap)

Ordering information:

| Description | UOM | Cat. No. |
|---|-------------|--------------|
| 15 ml CT, Sterile, Heavy metal free cap | 1*500 items | VWRA525-1559 |
| 15 ml CT, Sterile, IW, Heavy metal free cap | 1*500 items | VWRA525-1560 |
| 50 ml CT, Sterile, Heavy metal free cap | 1*500 items | VWRA525-1562 |
| 50 ml CT, Sterile, IW Heavy metal free cap | 1*500 items | VWRA525-1563 |



RESERVOIR

Key features:

- Made using superior quality polystyrene (PS)
- Convenient pour-off spouts on all four corners.
- Wide base for stability and preventing spillage
- Graduation on inside wall.
- Angled bottom for practically complete withdrawal of sample

Ordering information:

| Description | UOM | Cat. No. |
|---|-------------|--------------|
| Reservoir, 10 ml, Non sterile, Bulk Pack | 1*500 items | VWRA613-6725 |
| Reservoir, 10 ml, Sterile, Individually wrapped | 1*50 items | VWRA613-6726 |
| Reservoir, 10 ml, Sterile | 1*200 items | VWRA613-6727 |
| Reservoir, 25 ml, Non Sterile, Bulk Pack | 1*500 items | VWRA613-6728 |
| Reservoir, 25 ml, Sterile, Individually wrapped | 1*50 items | VWRA613-6729 |
| Reservoir, 25 ml, Sterile | 1*200 items | VWRA613-6730 |
| Reservoir, 50 ml, Non Sterile, Bulk Pack | 1*500 items | VWRA613-6731 |
| Reservoir, 50 ml, Sterile, Individually wrapped | 1*50 items | VWRA613-6732 |
| Reservoir, 50 ml, Sterile | 1*200 items | VWRA613-6733 |



VWR® CRYOVIALS

DESIGNED FOR FREEZING SAMPLES IN ALL CRYOPRESERVATION APPLICATIONS

These vials feature an internal thread with washer or external thread. The caps and vials are made from the same batch of materials to ensure equal dilation coefficient, resulting in optimum sealing characteristics.

- Manufactured from polypropylene to withstand temperatures down to -196 °C
- Manufactured in cleanroom environment (Class 10,000)
- Free of RNase, DNase and pyrogens
- Easy sample identification, large and clear patch for personalized labeling
- Sterile (gamma irradiated)
- V bottom for maximum sample recovery
- Externally threaded without O-ring to avoid contamination
- Hepta foot/round bottom vial option for user to choose based on the application



Ordering information:

VWR® Cryovials

| Volume | Cap Type | Packaging | Cat. No. |
|--------|---------------------------------|-----------------|--------------|
| 1 ml | Hepta foot cryotube with cap | 1 * 1,000 items | VWRA479-2280 |
| 1 ml | Hepta foot cryotube with cap st | 1 * 1,000 items | VWRA479-2281 |
| 1.8 ml | Hepta foot cryotube with cap | 1 * 1,000 items | VWRA479-2282 |
| 1.8 ml | Hepta foot cryotube with cap st | 1 * 1,000 items | VWRA479-2283 |
| 3.5 ml | Hepta foot cryotube with cap | 1 * 1,000 items | VWRA479-2284 |
| 3.5 ml | Hepta foot cryotube with cap st | 1 * 1,000 items | VWRA479-2285 |
| 4.5 ml | Hepta foot cryotube with cap | 1 * 500 items | VWRA479-2286 |
| 4.5 ml | Hepta foot cryotube with cap st | 1 * 500 items | VWRA479-2287 |

VWR® CRYOBBOXES

- Suitable for storage temperatures down to -186°C
- Available in a variety of color options
- Grid option for coding on lid
- Clear lid material

Made with PC material.

Boxes are stackable. Designed for 25, 81, or 100 places to store both internal and external threaded vials (1 - 5 ml).

Base made with color options red, blue, green, white, and yellow. Lid has grid option for coding and made with clear material.

Cryo tube picker is included.

**Ordering information:****VWR® Cryoboxes**

| No. of Places | Vial Size | Color | Packaging | NA Cat. No. | EU Cat. No. |
|---------------|-----------|--------|-----------|-------------|-------------|
| 25 | 1-2 mL | Blue | Pack of 5 | 89236-038 | 479-2389 |
| 25 | 1-2 mL | Green | Pack of 5 | 89236-036 | 479-2390 |
| 25 | 1-2 mL | Mixed | Pack of 5 | 89236-032 | 479-2388 |
| 25 | 1-2 mL | Red | Pack of 5 | 89236-034 | 479-2391 |
| 25 | 1-2 mL | White | Pack of 5 | 89236-040 | 479-2392 |
| 25 | 1-2 mL | Yellow | Pack of 5 | 89236-042 | 479-2393 |
| 81 | 1-2 mL | Blue | Pack of 5 | 89236-046 | 479-2395 |
| 81 | 1-2 mL | Green | Pack of 5 | 89236-048 | 479-2396 |
| 81 | 1-2 mL | Mixed | Pack of 5 | 89236-044 | 479-2394 |
| 81 | 1-2 mL | Red | Pack of 5 | 89236-050 | 479-2397 |
| 81 | 1-2 mL | White | Pack of 5 | 89236-052 | 479-2398 |
| 81 | 1-2 mL | Yellow | Pack of 5 | 89236-054 | 479-2399 |
| 81 | 3 mL | Blue | Pack of 5 | 89236-058 | 479-2401 |
| 81 | 3 mL | Green | Pack of 5 | 89236-060 | 479-2402 |
| 81 | 3 mL | Red | Pack of 5 | 89236-062 | 479-2403 |
| 81 | 3 mL | White | Pack of 5 | 89236-064 | 479-2404 |
| 81 | 3 mL | Yellow | Pack of 5 | 89236-066 | 479-2405 |
| 81 | 4-5 mL | Blue | Pack of 5 | 89236-082 | 479-2414 |
| 81 | 4-5 mL | Green | Pack of 5 | 89236-084 | 479-2415 |
| 81 | 4-5 mL | Mixed | Pack of 5 | 89236-080 | 479-2412 |
| 81 | 4-5 mL | Red | Pack of 5 | 89236-086 | 479-2416 |
| 81 | 4-5 mL | White | Pack of 5 | 89236-088 | 479-2417 |
| 81 | 4-5 mL | Yellow | Pack of 5 | 89236-090 | 479-2418 |
| 100 | 1-2 mL | Blue | Pack of 5 | 89236-070 | 479-2407 |
| 100 | 1-2 mL | Green | Pack of 5 | 89236-072 | 479-2408 |
| 100 | 1-2 mL | Mixed | Pack of 5 | 89236-068 | 479-2406 |
| 100 | 1-2 mL | Red | Pack of 5 | 89236-074 | 479-2409 |
| 100 | 1-2 mL | White | Pack of 5 | 89236-076 | 479-2410 |
| 100 | 1-2 mL | Yellow | Pack of 5 | 89236-078 | 479-2411 |

Cryoboxes for 2mL 2D Barcoded Cryovials

| No. of Places | Color | Packaging | Cat. No. |
|---------------|--------|-----------------------|----------------|
| 81 | Blue | Pack of 10/Case of 50 | VWRI210-000022 |
| 81 | Green | Pack of 10/Case of 50 | VWRI210-000023 |
| 81 | Red | Pack of 10/Case of 50 | VWRI210-000024 |
| 81 | Yellow | Pack of 10/Case of 50 | VWRI210-000025 |

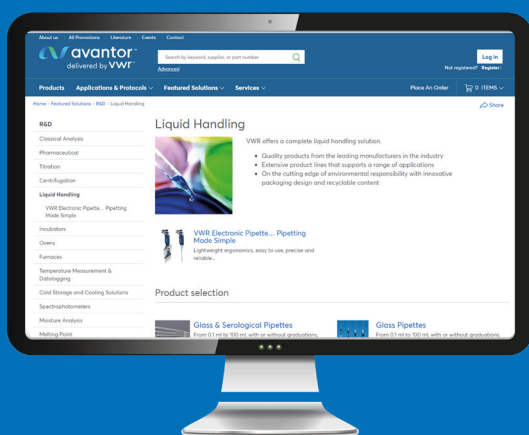
Liquid Handling

Liquid handling is carried out in every laboratory from basic up to research applications.

VWR offers a complete range of solutions for every need of:

- Applications and budget
- Safety (i.e. biological, chemical or radioactive samples)
- Ergonomics to prevent musculoskeletal injuries
- Accredited pipette calibration and repair service

VISIT
IN.VWR.COM



IN.VWR.COM

Featured Solutions | R&D | Liquid Handling

VWR® solutions for cell culture

WELCOME TO THE VWR® BRANDED RANGE OF PRODUCTS FOR CELL CULTURE

Within the variety of Life Science techniques cultivating cells probably has a unique position. Although a daily routine, being aware that a cell is the basic unit of life, you feel accountable almost as if your cells were your pet, isn't it? No matter if you are seeding, expanding, harvesting, storing or analysing your cells, find the tools you need and that you can rely on in this catalogue.

The cell culture plastics, filtration and liquid handling chapters will help you maintaining aseptic conditions all along the workflow, including single-use assemblies and bags for biopharmaceutical production.

Although this catalogue covers a huge range of products, you might miss what you are looking for in this current selection. If this is the case or if you have any question on the products and services displayed, don't hesitate to contact us for any consultancy needed.

We are proud to support you in your aim to explore new frontiers.

Your VWR Life Science Team



VWR®, CELL CULTURE FLASKS, NON TREATED OR TREATED

CELL AND TISSUE CULTURE FLASKS ARE PERFECT FOR CELL GROWTH

Key features:

- Available with five different growth areas
- Flask surface is flat and free from striation to maximise usable growth area
- Two different cap styles can be used in both open and closed systems
- Innovative angled neck design offers good pipette and cell scraper access
- Triangular top with wide base provides stability
- Easy stacking
- Frosted area near the neck for easy marking/writing
- Engraved graduations on multiple sides
- 100% integrity tested
- Sterilised by electron beam irradiation
- Free from DNase and RNase and non-pyrogenic



Non treated: Cell and tissue culture flasks are ideal for applications where cell attachment is not desired.

TC-Treated: For optimal cell attachment and growth.

TC-Treated, extended (*): Deeper flask for increased recommended working volume.

Increased cell attachment surface: This highly hydrophilic surface offers a significant advantage over the traditional cell culture surface. The surface treatment can improve cell spreading and attachment, and is suitable for cells that may adhere poorly due to cell phenotype, stressful culture conditions, or those which normally require additional biological coatings for attachment.

ISO 13485:2003 and ISO 9001:2008 certified.

Ordering information:

| Capacity (ml) | Surface | Growth area (cm ²) | Working volume (ml) | Closure type | Packed | Pk | Cat. No. |
|------------------------------------|---------------------------|--------------------------------|---------------------|---------------------|-------------------------|-----|----------|
| Flasks for suspension cells | | | | | | | |
| 25 | Non treated | - | 20 | Plug seal screw cap | 10 per bag/200 per case | 200 | 734-2783 |
| 25 | Non treated | - | 20 | Vented cap | 10 per bag/200 per case | 200 | 734-2784 |
| 50 | Non treated | - | 40 | Plug seal screw cap | 10 per bag/200 per case | 200 | 734-2785 |
| 50 | Non treated | - | 40 | Vented cap | 10 per bag/200 per case | 200 | 734-2786 |
| 250 | Non treated | - | 175 | Plug seal screw cap | 5 per bag/100 per case | 100 | 734-2787 |
| 250 | Non treated | - | 175 | Vented cap | 5 per bag/100 per case | 100 | 734-2788 |
| 600 | Non treated | - | 400 | Plug seal screw cap | 5 per bag/40 per case | 40 | 734-2789 |
| 600 | Non treated | - | 400 | Vented cap | 5 per bag/40 per case | 40 | 734-2790 |
| 850 | Non treated | - | 800 | Plug seal screw cap | 3 per bag/18 per case | 18 | 734-2791 |
| 850 | Non treated | - | 800 | Vented cap | 3 per bag/18 per case | 18 | 734-2792 |
| Flasks for adherent cells | | | | | | | |
| 25 | TC-treated | 12,5 | 2,5 - 3,75 | Plug seal screw cap | 10 per bag/200 per case | 200 | 734-2310 |
| 25 | TC-treated | 12,5 | 2,5 - 3,75 | Vented cap | 10 per bag/200 per case | 200 | 734-2309 |
| 25 | Increased cell attachment | 12,5 | 2,5 - 3,75 | Plug seal screw cap | 10 per bag/200 per case | 200 | 734-2804 |
| 25 | Increased cell attachment | 12,5 | 2,5 - 3,75 | Vented cap | 10 per bag/200 per case | 200 | 734-2805 |
| 50 | TC-treated | 25,0 | 5 - 7,5 | Plug seal screw cap | 10 per bag/200 per case | 200 | 734-2312 |
| 50 | TC-treated | 25,0 | 5 - 7,5 | Vented cap | 10 per bag/200 per case | 200 | 734-2311 |
| 50 | Increased cell attachment | 25,0 | 5 - 7,5 | Plug seal screw cap | 10 per bag/200 per case | 200 | 734-2806 |
| 50 | Increased cell attachment | 25,0 | 5 - 7,5 | Vented cap | 10 per bag/200 per case | 200 | 734-2807 |
| 250 | TC-treated | 75,0 | 15 - 22,5 | Plug seal screw cap | 5 per bag/100 per case | 100 | 734-2314 |
| 250 | TC-treated | 75,0 | 15 - 22,5 | Vented cap | 5 per bag/100 per case | 100 | 734-2313 |
| 250 | Increased cell attachment | 75,0 | 15 - 22,5 | Plug seal screw cap | 5 per bag/100 per case | 100 | 734-2808 |
| 250 | Increased cell attachment | 75,0 | 15 - 22,5 | Vented cap | 5 per bag/100 per case | 100 | 734-2809 |
| 600 | TC-treated | 182,0 | 36,4 - 54,6 | Plug seal screw cap | 5 per bag/40 per case | 40 | 734-2316 |
| 600 | TC-treated | 182,0 | 36,4 - 54,6 | Vented cap | 5 per bag/40 per case | 40 | 734-2315 |
| 600 | Increased cell attachment | 182,0 | 36,4 - 54,6 | Plug seal screw cap | 5 per bag/40 per case | 40 | 734-2810 |
| 600 | Increased cell attachment | 182,0 | 36,4 - 54,6 | Vented cap | 5 per bag/40 per case | 40 | 734-2811 |
| 850 | TC-treated | 300,0 | 60 - 90 | Plug seal screw cap | 3 per bag/18 per case | 18 | 734-2601 |
| 850 | TC-treated | 300,0 | 60 - 90 | Vented cap | 3 per bag/18 per case | 18 | 734-2600 |
| 850 | Increased cell attachment | 300,0 | 60 - 90 | Plug seal screw cap | 3 per bag/18 per case | 18 | 734-2812 |
| 850 | Increased cell attachment | 300,0 | 60 - 90 | Vented cap | 3 per bag/18 per case | 18 | 734-2813 |

VWR®, MULTIWELL CELL CULTURE PLATES

VWR MULTIWELL CELL CULTURE PLATES ARE AVAILABLE WITH A CHOICE OF SURFACE TREATMENTS

Key features:

- Uniform well volume ensures an equal growth surface area
- Well surface is smooth and free from striation to maximise usable growth area
- Raised rims on wells with uniform rings on the lid to reduce evaporation
- Single-position lid reduces the risk of cross-contamination and handling mistakes
- Wells are labelled with alphanumeric code for easy identification
- Suitable for use with all common instruments and automation
- Sterilised by electron beam irradiation
- Free from DNase and RNase, and non pyrogenic



Increased cell attachment surface treatment: This highly hydrophilic surface offers a significant advantage over the traditional cell culture surface. The surface treatment can improve cell spreading and attachment, and is suitable for cells that may adhere poorly due to cell phenotype, stressful culture conditions, or those which normally require additional biological coatings for attachment.

TC-treated: These plates are vacuum-gas plasma-treated for consistent cell attachment and growth.

Non treated: Non treated cell and tissue culture plates are ideal for applications where cell attachment is not desired.

Culture area = cm² per well

ISO 13485:2003, ISO 9001:2008

Individually wrapped in peel-to-open paper/plastic blister packs.

Ordering information:

| Description | Colour | Culture area (cm ²) | Recommended working volume (ml) | Sterile | Packed | Pk | Cat. No. |
|---|--------|---------------------------------|---------------------------------|---------|--------|-----|----------|
| 4-well plates, flat bottom, TC-treated | Clear | 1,96 | 1,0 | + | 1/bag | 100 | 732-2905 |
| 4-well plates, flat bottom, non treated | Clear | 1,96 | 1,0 | + | 1/bag | 100 | 732-2904 |
| 6-well plates, flat bottom, treated for increased cell attachment | Clear | 9,6 | 1,9 – 2,9 | + | 1/bag | 100 | 734-2798 |
| 6-well plates, flat bottom, TC-treated | Clear | 9,6 | 1,9 – 2,9 | + | 1/bag | 100 | 734-2323 |
| 6-well plates, flat bottom, non treated | Clear | 9,6 | 1,9 – 2,9 | + | 1/bag | 100 | 734-2777 |
| 12-well plates, flat bottom, treated for increased cell attachment | Clear | 3,85 | 0,76 – 1,14 | + | 1/bag | 100 | 734-2799 |
| 12-well plates, flat bottom, TC-treated | Clear | 3,85 | 0,76 – 1,14 | + | 1/bag | 100 | 734-2324 |
| 12-well plates, flat bottom, non treated | Clear | 3,85 | 0,76 – 1,14 | + | 1/bag | 100 | 734-2778 |
| 24-well plates, flat bottom, treated for increased cell attachment | Clear | 1,93 | 0,38 – 0,57 | + | 1/bag | 100 | 734-2800 |
| 24-well plates, flat bottom, TC-treated | Clear | 1,93 | 0,38 – 0,57 | + | 1/bag | 100 | 734-2325 |
| 24-well plates, flat bottom, non treated | Clear | 1,93 | 0,38 – 0,57 | + | 1/bag | 100 | 734-2779 |
| 48-well plates, flat bottom, treated for increased cell attachment | Clear | 0,83 | 0,19 – 0,29 | + | 1/bag | 100 | 734-2801 |
| 48-well plates, flat bottom, TC-treated | Clear | 0,83 | 0,19 – 0,29 | + | 1/bag | 100 | 734-2326 |
| 48-well plates, flat bottom, non treated | Clear | 0,83 | 0,19 – 0,29 | + | 1/bag | 100 | 734-2780 |
| 96-well plates, flat bottom, treated for increased cell attachment | Clear | 0,33 | 0,075 – 0,20 | + | 1/bag | 100 | 734-2802 |
| 96-well plates, flat bottom, TC-treated | Clear | 0,33 | 0,075 – 0,20 | + | 1/bag | 100 | 734-2327 |
| 96-well plates, flat bottom, non treated | Clear | 0,33 | 0,075 – 0,20 | + | 1/bag | 100 | 734-2781 |
| 96-well plates, round bottom, treated for increased cell attachment | Clear | 0,32 | 0,075 – 0,20 | + | 1/bag | 100 | 734-2803 |
| 96-well plates, round bottom, TC-treated | Clear | 0,32 | 0,075 – 0,20 | + | 1/bag | 100 | 734-2328 |
| 96-well plates, round bottom, non treated | Clear | 0,32 | 0,075 – 0,20 | + | 1/bag | 100 | 734-2782 |
| 384-well plates, flat bottom, TC-treated | Clear | 0,1135 | 10 – 100 µl | + | 1/bag | 100 | 732-2907 |
| 384-well plates, flat bottom, non treated | Clear | 0,1135 | 10 – 100 µl | + | 1/bag | 100 | 732-2906 |

VWR®, ROLLER BOTTLES

OPTIMAL VESSELS FOR LARGE SCALE CELL GROWTH AND MULTIPLICATION, SUITABLE FOR BOTH RESEARCH AND MANUFACTURING APPLICATIONS, INCLUDING THE GROWTH OF MAMMALIAN CELLS FOR VIRUS PROPAGATION AND BIOPRODUCTION

Key features:

- Caps feature large knurls for easy grip
- Two different cap styles can be used in both open and closed systems
- Every bottle features silk-printed graduations
- Non pyrogenic
- Temperature range: -20 to +50 °C
- Every case features a labelled lot number
- Sterilised by electron beam irradiation



These vessels suit automation and fit all common roller bottle instrumentation. Vessels are available with a large area surface area for cell growth of 490, 850 and 1900 cm² for adhesion cultures and 1 or 2 litre volume, for suspension cultures. The bottles are surface treated for optimal cell attachment. Bottles with smooth surface are free from striation, to maximise usable growth area; those with ribbed surface offer a larger surface area for cell growth.

ISO 9001, ISO 13485

Note: Bottles are not autoclavable.

Ordering information:

| Description | Capacity (ml) | Growth area (cm ²) | Packed | Pk | Cat. No. |
|--|---------------|--------------------------------|-----------------|----|----------|
| Treated surface, plug-seal cap | 1000 | 490 | 2/bag, 40/case | 40 | 734-2749 |
| Treated surface, plug-seal cap | 2000 | 850 | 20/bag, 20/case | 20 | 734-2750 |
| Treated surface, plug-seal cap | 2000 | 850 | 5/bag, 40/case | 40 | 734-2751 |
| Treated surface, vented cap | 2000 | 850 | 2/bag, 40/case | 40 | 734-2752 |
| Treated surface, ribbed, plug-seal cap | 2000 | 1900 | 5/bag, 40/case | 40 | 734-2753 |

VWR®, MEDIA BOTTLES WITH SCREW CAP

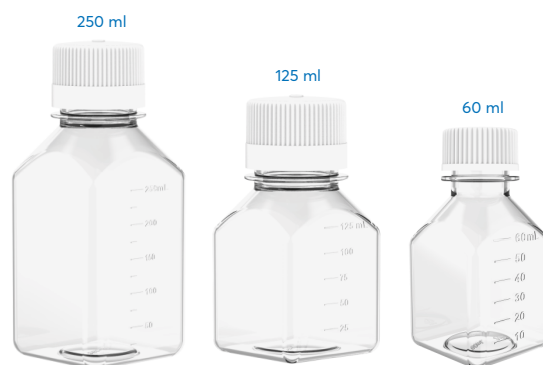
PC, AUTOCLAVABLE, NARROW MOUTH BOTTLES WITH STANDARD PP CAPS

Key features:

- Graduation markings are molded in for reference filling
- Bottles are gamma sterilized (SAL 10⁻⁶), with blue PP caps attached

Media Bottles are square/octagonal PETG ergonomic bottles. They are ideal for storage of media, laboratory reagents and biological buffers.

Packaging: Each case is specifically packaged for sterile production with multi-barrier elastomer packaging.



Ordering information:

Media bottles, PETG

| Product | Pack size | Cat. No. |
|------------------------------|-----------|--------------|
| 30 ml Media Bottle With Cap | 96 | VWRA215-4626 |
| 60 ml Media Bottle With Cap | 96 | VWRA215-4627 |
| 125 ml Media Bottle With Cap | 48 | VWRA215-4628 |
| 250 ml Media Bottle With Cap | 48 | VWRA215-4629 |
| 500 ml Media Bottle With Cap | 24 | VWRA215-4630 |
| 1 L Media Bottle With Cap | 24 | VWRA215-4631 |
| 2 L Media Bottle With Cap | 12 | VWRA215-4632 |

Media Bottles, PET

| Product | Pack size | Cat. No. |
|------------------------------|-----------|--------------|
| 125 ml Media Bottle With Cap | 96 | VWRA215-4633 |
| 250 ml Media Bottle With Cap | 60 | VWRA215-4634 |
| 500 ml Media Bottle With Cap | 48 | VWRA215-4635 |
| 1 L Media Bottle With Cap | 24 | VWRA215-4636 |

VWR®, BOTTLE-TOP VACUUM FILTRATION SYSTEMS, PES PS FUNNEL AND COLLECTION RESERVOIR. SYSTEMS FOR VACUUM FILTRATION OF AQUEOUS SOLUTIONS INCLUDING CELL CULTURE MEDIA, BUFFERS OR OTHER BIOLOGICAL FLUIDS.

Key features:

- Each individual unit is lot numbered for traceability
- Once filtration is complete, solution can be stored in the collection reservoir until needed
- Non pyrogenic, non cytotoxic

PES membrane: Low protein binding and low extractables. Ideal for tissue culture applications.

0,2 µm: Ideal for sterilisation applications and media preparation.

0,45 µm: Ideal for buffer clarification.

ISO 10993-5:1999

Full unit includes the filtration funnel with either 0,2, or 0,45 µm PES membrane, vacuum port, lid, collection reservoir and cap for storage.

Individually packed in easy peel-to-open bags, receiver bottle cap is individually wrapped.



Ordering information:

| Description | Capacity (ml) | Pore size (µm) | Membrane Ø (mm) | Pk | Cat. No. |
|---|---------------|----------------|-----------------|----|----------|
| Complete filtration units | | | | | |
| Complete filtration unit | 150 | 0,2 | 50 | 12 | 514-0328 |
| Complete filtration unit | 150 | 0,45 | 50 | 12 | 514-0329 |
| Complete filtration unit | 250 | 0,2 | 50 | 12 | 514-0330 |
| Complete filtration unit | 250 | 0,45 | 50 | 12 | 514-0331 |
| Complete filtration unit | 500 | 0,2 | 75 | 12 | 514-0332 |
| Complete filtration unit | 500 | 0,45 | 75 | 12 | 514-0333 |
| Complete filtration unit | 1000 | 0,2 | 91 | 12 | 514-0334 |
| Complete filtration unit | 1000 | 0,45 | 91 | 12 | 514-0335 |
| Filtration cups only | | | | | |
| Filtration cup | 150 | 0,2 | 50 | 24 | 514-0336 |
| Filtration cup | 150 | 0,45 | 50 | 24 | 514-0337 |
| Filtration cup | 250 | 0,2 | 50 | 24 | 514-0338 |
| Filtration cup | 250 | 0,45 | 50 | 24 | 514-0339 |
| Filtration cup | 500 | 0,2 | 75 | 24 | 514-0340 |
| Filtration cup | 500 | 0,45 | 75 | 24 | 514-0341 |
| Filtration cup | 1000 | 0,2 | 91 | 24 | 514-0342 |
| Filtration cup | 1000 | 0,45 | 91 | 24 | 514-0343 |
| PS reservoir bottles (caps included) | | | | | |
| Reservoir bottle with cap | 150 | - | - | 24 | 514-0344 |
| Reservoir bottle with cap | 250 | - | - | 24 | 514-0345 |
| Reservoir bottle with cap | 500 | - | - | 24 | 514-0346 |
| Reservoir bottle with cap | 1000 | - | - | 24 | 514-0347 |

VWR®, BOTTLE-TOP VACUUM FILTRATION SYSTEMS, PVDF, SFCA, NYLON
THESE VACUUM FILTER UNITS ARE VERY USEFUL IN LARGE VOLUME SAMPLES SEPARATION AND PURIFICATION.

Key features:

- Large knurls on the reservoir bottle cap
- Wide and easy access bottle mouth for efficient and stable pouring
- Engraved graduation
- Ergonomically designed side walls and collar
- Hose connector can fit multiple hose diameters
- Electron beam sterilised
- Non pyrogenic

PVDF membrane: Extremely low protein binding; for filtration of non aggressive aqueous and mild organic solutions, or where maximising protein recovery is important.

Nylon membrane: Provides a broad range of chemical compatibility for the filtration of either aqueous or organic solvents; hydrophobic; can be used in a broad pH range.

Each individual unit is lot numbered for easy identification and tracking.

Packed in easy peel-to-open plastic bags. Receiver bottle cap is individually wrapped.



Ordering information:

| Membrane | Capacity (ml) | Pore size (µm) | Membrane Ø (mm) | Pk | Cat. No. |
|----------------------------------|---------------|----------------|-----------------|----|----------|
| Complete filtration units | | | | | |
| PVDF | 150 | 0,10 | 50 | 12 | 514-1040 |
| PVDF | 150 | 0,22 | 50 | 12 | 514-1041 |
| PVDF | 150 | 0,45 | 50 | 12 | 514-1042 |
| PVDF | 250 | 0,10 | 50 | 12 | 514-1043 |
| PVDF | 250 | 0,22 | 50 | 12 | 514-1044 |
| PVDF | 250 | 0,45 | 50 | 12 | 514-1045 |
| PVDF | 500 | 0,10 | 75 | 12 | 514-1046 |
| PVDF | 500 | 0,22 | 75 | 12 | 514-1047 |
| PVDF | 500 | 0,45 | 75 | 12 | 514-1048 |
| PVDF | 1000 | 0,10 | 91 | 12 | 514-1049 |
| PVDF | 1000 | 0,22 | 91 | 12 | 514-1050 |
| PVDF | 1000 | 0,45 | 91 | 12 | 514-1051 |
| SFCA | 150 | 0,22 | 50 | 12 | 514-1052 |
| SFCA | 150 | 0,45 | 50 | 12 | 514-1053 |
| SFCA | 250 | 0,22 | 50 | 12 | 514-1054 |
| SFCA | 250 | 0,45 | 50 | 12 | 514-1055 |
| SFCA | 500 | 0,22 | 75 | 12 | 514-1056 |
| SFCA | 500 | 0,45 | 75 | 12 | 514-1057 |
| SFCA | 1000 | 0,22 | 91 | 12 | 514-1058 |
| SFCA | 1000 | 0,45 | 91 | 12 | 514-1059 |
| Nylon | 150 | 0,22 | 50 | 12 | 514-1060 |
| Nylon | 150 | 0,45 | 50 | 12 | 514-1061 |
| Nylon | 250 | 0,22 | 50 | 12 | 514-1062 |
| Nylon | 250 | 0,45 | 50 | 12 | 514-1063 |
| Nylon | 500 | 0,22 | 75 | 12 | 514-1064 |
| Nylon | 500 | 0,45 | 75 | 12 | 514-1065 |
| Nylon | 1000 | 0,22 | 91 | 12 | 514-1066 |
| Nylon | 1000 | 0,45 | 91 | 12 | 514-1067 |

| Membrane | Capacity (ml) | Pore size (µm) | Membrane Ø (mm) | Pk | Cat. No. |
|-----------------------------|---------------|----------------|-----------------|----|----------|
| Filtration cups only | | | | | |
| PVDF | 150 | 0,10 | 50 | 24 | 514-1012 |
| PVDF | 150 | 0,22 | 50 | 24 | 514-1013 |
| PVDF | 150 | 0,45 | 50 | 24 | 514-1014 |
| PVDF | 250 | 0,10 | 50 | 24 | 514-1015 |
| PVDF | 250 | 0,22 | 50 | 24 | 514-1016 |
| PVDF | 250 | 0,45 | 50 | 24 | 514-1017 |
| PVDF | 500 | 0,10 | 75 | 24 | 514-1018 |
| PVDF | 500 | 0,22 | 75 | 24 | 514-1019 |
| PVDF | 500 | 0,45 | 75 | 24 | 514-1020 |
| PVDF | 1000 | 0,10 | 91 | 24 | 514-1021 |
| PVDF | 1000 | 0,22 | 91 | 24 | 514-1022 |
| PVDF | 1000 | 0,45 | 91 | 24 | 514-1023 |
| SFCA | 150 | 0,22 | 50 | 24 | 514-1032 |
| SFCA | 150 | 0,45 | 50 | 24 | 514-1033 |
| SFCA | 250 | 0,22 | 50 | 24 | 514-1034 |
| SFCA | 250 | 0,45 | 50 | 24 | 514-1035 |
| SFCA | 500 | 0,22 | 75 | 24 | 514-1036 |
| SFCA | 500 | 0,45 | 75 | 24 | 514-1037 |
| SFCA | 1000 | 0,22 | 91 | 24 | 514-1038 |
| SFCA | 1000 | 0,45 | 91 | 24 | 514-1039 |
| Nylon | 150 | 0,22 | 50 | 24 | 514-1024 |
| Nylon | 150 | 0,45 | 50 | 24 | 514-1025 |
| Nylon | 250 | 0,22 | 50 | 24 | 514-1026 |
| Nylon | 250 | 0,45 | 50 | 24 | 514-1027 |
| Nylon | 500 | 0,22 | 75 | 24 | 514-1028 |
| Nylon | 500 | 0,45 | 75 | 24 | 514-1029 |
| Nylon | 1000 | 0,22 | 91 | 24 | 514-1030 |
| Nylon | 1000 | 0,45 | 91 | 24 | 514-1031 |

VWR®, SEROLOGICAL PIPETTE, STANDARD
100% HIGH CLARITY POLYSTYRENE, GRADUATED, STERILE

Key features:

- Graduations are calibrated for accurate dispensing to within ±3%
- Colour coded stripes for quick volume identification
- Non pyrogenic
- Filter plug

Individually wrapped in paper-plastic bags or bulk packed in bags.



Ordering information:

| Capacity (ml) | Division (ml) | Colour code | Packed | Pk | Cat. No. |
|-----------------------------|---------------|-------------|---|-------|----------|
| Individually wrapped | | | | | |
| 1 | 0,01 | Yellow | Individually wrapped, 100 per bag, 10 bags per carton | 1.000 | 612-3707 |
| 2 | 0,01 | Green | Individually wrapped, 100 per bag, 8 bags per carton | 800 | 612-3704 |
| 5 | 0,10 | Blue | Individually wrapped, 50 per bag, 6 bags per carton | 300 | 612-3702 |
| 10 | 0,10 | Red | Individually wrapped, 50 per bag, 4 bags per carton | 200 | 612-3700 |
| 25 | 0,20 | Dark red | Individually wrapped, 50 per bag, 4 bags per carton | 200 | 612-3698 |
| 50 | 1,00 | Black | Individually wrapped, 25 per bag, 4 bags per carton | 100 | 612-3696 |
| Bulk packed | | | | | |
| 1 | 0,01 | Yellow | 25 per bag, 40 bags per carton | 1.000 | 612-3705 |
| 2 | 0,01 | Green | 25 per bag, 28 bags per carton | 700 | 612-3703 |
| 5 | 0,10 | Blue | 50 per bag, 10 bags per carton | 500 | 612-3701 |
| 10 | 0,10 | Red | 25 per bag, 14 bags per carton | 350 | 612-3699 |
| 25 | 0,20 | Dark red | 25 per bag, 14 bags per carton | 350 | 612-3697 |
| 50 | 1,00 | Black | 25 per bag, 10 bags per carton | 250 | 612-3695 |

VWR®, SAFETYPETTE, PIPETTE FILLER
FOR GLASS AND PLASTIC PIPETTES

Pipette filler for glass and plastic pipettes from 1 to 100 ml.

- Replaceable hydrophobic membrane filter protects the instrument from liquid penetration
- Separate buttons for aspirating/dispensing and discharging
- Silicone adapter for leakproof positioning of each pipette

The Safetypette pipette filler facilitates the pipetting of a wide range of liquids. The practical arrangement of the controls makes work easier giving maximum safety during serial pipetting.

Supplied with three separate nose cones in three different colours.



Ordering information:

| Description | Pk | Cat. No. |
|-------------------------------------|----|----------|
| Pipette filler Safetypette | 1 | 612-4548 |
| Accessories | | |
| Replacement filter set 0,45 µm | 5 | 612-3678 |
| Replacement filter set 0,2 µm | 5 | 612-3681 |
| Replacement silicone pipette holder | 1 | 612-3679 |

VWR®, POWERPETTE PLUS, PIPETTE CONTROLLER
PIPETTE CONTROLLER FOR GLASS AND PLASTIC
PIPETTES FROM 1 TO 100 ML

Pipette controllers are meant to make your work with Pipettes easier, but more often than not, they end-up creating more problems than solutions, resulting in waste of both money as well as time. Most devices found in the market suffer from the same problem that they advertise to solve - convenience. Pipette controller for glass and plastic pipettes from 1 to 100 ml.

- Lightweight construction for constant ease of use over prolonged usage
- Unique nose cone angle for enhanced flexibility in operation, even when in fume hood
- Eco-friendly rechargeable NiMH batteries, offering upto 8 hours of continuous output
- Easily replaceable batteries
- Intelligent charger, can be used separately, and with wall-mount and desktop stand
- Autoclavable tip cone for avoiding cross-contamination
- Available in vibrant colors



Offers a unique combination of features to give precision fingertip control in a classic streamlined design, suitable for users with large or small hands. Gravity dispense mode is designed for use with 'To Deliver' (TD) pipettes.

| | |
|----------------------------------|---|
| Power | 2 x 1.2 V / 1000 mAh rechargeable NiMH batteries |
| Battery usage Duration | Eight hours continuous use |
| Battery Charging Duration | 2 - 3 hours to charge fully |
| Volumetric Range | Plastic or Glass pipette from 0.1 ml up to 200 ml |
| Safety System | Replaceable hydrophobic 0.45 µm PTFE filter & Safety check valve |
| Standard Accessories | <ul style="list-style-type: none"> - NiMH Batteries - Battery Charger - Hydrophobic PTFE membrane Filter 0.45 µm - 2Pc - Hydrophobic PTFE membrane Filter 0.20 µm - 1Pc - Wall mounting stand - Desktop stand |

Ordering information:

| Description | Colour code | Pk | Cat. No. |
|--------------------|-------------|-------------|--------------|
| Pipette controller | Green | 1 * 1 items | VWRA612-6659 |
| Pipette controller | Orange | 2 * 1 items | VWRA612-6660 |
| Pipette controller | Blue | 3 * 1 items | VWRA612-6661 |
| Pipette controller | Red | 4 * 1 items | VWRA612-6662 |

VWR®, PHP PLATES
HIGH PERFORMANCE, GAMMA STERILIZED AND DISPOSABLE
PETRI DISHES FOR EVERY MICROBIOLOGY LAB

Key features:

- Manufactured in 10K Cleanroom for dust free final products
- Sterilized as per 10⁶ gamma irradiation
- Ensures highest possible flatness for zero wastage of media (A to B and C to D lesser than 0.01 mm)
- Made of US FDA approved PS with best-in-class clarity and tensile strength
- Rimming of plates are designed for better stacking, marking patch for writing

The innovative packaging of these PHP plates is breakage proof.



Ordering information:

| Description | UOM | Cat. No. |
|---|---------------|--------------|
| VWR® PHP Plate 90 mm, Sterile, Stanck of 10 | 1 * 600 items | VWRA391-0645 |
| VWR® PHP Plate 90 mm, Sterile, Stanck of 20 | 1 * 600 items | VWRA391-0646 |
| VWR PHP plates 90 mm diameter, Vented, Aseptic | 1 * 600 items | VWRA391-0686 |
| VWR PHP plates 90 mm diameter, Non-Vented, Aseptic | 1 * 600 items | VWRA391-0687 |
| VWR PHP plates 90 mm diameter, Vented, Aseptic | 1 * 600 items | VWRA391-0688 |
| VWR PHP plates 90 mm diameter, Non-Vented, Aseptic | 1 * 600 items | VWRA391-0689 |
| VWR PHP plates 90 mm diameter, Stack Size 10, Vented, Sterile | 1 * 600 items | VWRA391-0691 |
| VWR PHP plates 90 mm diameter, Stack Size 10, Non-Vented, Sterile | 1 * 600 items | VWRA391-0692 |
| VWR PHP plates 90 mm diameter, Stack Size 20, Vented, Sterile | 1 * 600 items | VWRA391-0693 |
| VWR PHP plates 90 mm diameter, Stack Size 20, Non-Vented, Sterile | 1 * 600 items | VWRA391-0694 |

VWR®, CARBOYS, NARROW NECK, ROUND, WITH SCREW CAPS LDPE, HDPE OR PP, TRANSLUCENT WITH PURPLE SCREW CAPS

Use for storing and dispensing solutions and media. Round carboys feature an integrated shoulder handle. Graduated to identify the volume dispensed.

LDPE carboys

- Ideal for high purity applications as they have high resistance to chemicals (widely used in ophthalmic product range, like eye droppers and nasal sprays).
- Ideal resin for cold storage (down to $-80\text{ }^{\circ}\text{C}$), working temperature -80 to $+80\text{ }^{\circ}\text{C}$
- Resistant to physical impact (will not break even if it falls accidentally, whereas PP carboys may lead to cracking at negative temperatures)
- LDPE products will bounce back to its original shape, as it is a highly flexible material
- Widely used in pharma industries

HDPE carboys

- High density polyethylene (HDPE), disposable carboys are ideal for storing and transfer of fluids and pharmaceutical/biotech reagents.
- Good for cold storage (down to $-80\text{ }^{\circ}\text{C}$), working temperature of -80 to $+120\text{ }^{\circ}\text{C}$
- High impact strength even at negative temperatures
- Widely used for long storage periods due to high chemical resistance
- Widely used in food and milk industries

PP carboys

- Ideal for sterile water storage, polypropylene (PP) carboys can be autoclaved before refilling to stop recurring bacterial growth.
- Excellent chemical resistance
- Working temperature: 0 to $+135\text{ }^{\circ}\text{C}$
- Autoclavable

Note: Polypropylene carboys are autoclavable. LDPE and HDPE carboys are not autoclavable. Always remove cap from carboy before autoclaving.

Resin meets US FDA 21 CFR, U SP Class VI.



Ordering information:

| Capacity | Type | Neck I-Ø (mm) | Thread (mm) | Pk | Cat. No. |
|---------------------|-------------|---------------|-------------|----|----------|
| LDPE carboys | | | | | |
| 10 L | Non sterile | 65 | 83 | 1 | 216-1704 |
| 15 L | Non sterile | 65 | 83 | 1 | 216-1918 |
| 20 L | Non sterile | 65 | 83 | 1 | 216-1706 |
| 25 L | Non sterile | 65 | 83 | 1 | 216-1908 |
| 50 L | Non sterile | 65 | 83 | 1 | 216-1738 |
| HDPE carboys | | | | | |
| 10 L | Non sterile | 65 | 83 | 1 | 216-1736 |
| 20 L | Non sterile | 65 | 83 | 1 | 216-1737 |
| 20 L | Sterile | 65 | 83 | 1 | 216-1729 |
| PP carboys | | | | | |
| 10 L | Non sterile | 65 | 83 | 1 | 216-1703 |
| 20 L | Non sterile | 65 | 83 | 1 | 216-1701 |
| 50 L | Non sterile | 65 | 83 | 1 | 216-1702 |

| Description | Pk | Cat. No. |
|------------------------------------|----|----------|
| Spare caps for VWR® carboys | | |
| Cap for narrow mouth VWR carboys | 1 | 216-1840 |

VWR®, CARBOYS, NARROW NECK, HEAVY-DUTY, ROUND, WITH SCREW CAP
PP, TRANSLUCENT, WITH PURPLE SCREW CAP

- Excellent chemical resistance
- Suitable for use from 0 to +135 °C
- Graduated to identify the volume dispensed
- Carboys feature an integrated shoulder handle

Use for storing and dispensing solutions and media. Ideal for sterile water storage, polypropylene carboys can be autoclaved before refilling to stop recurring bacterial growth.

Note: Always remove the cap from the carboy before autoclaving.

Resin meets US FDA 21 CFR, USP Class VI.



Ordering information:

| Capacity | Neck I-Ø (mm) | Thread (mm) | Pk | Cat. No. |
|----------|---------------|-------------|----|----------|
| 10 L | 65 | 83 | 1 | 216-1709 |
| 20 L | 65 | 83 | 1 | 216-1707 |

| Description | Pk | Cat. No. |
|------------------------------------|----|----------|
| Spare caps for VWR® carboys | | |
| Cap for narrow mouth VWR carboys | 1 | 216-1840 |

VWR®, CARBOYS, WIDE NECK, RECTANGULAR, WITH STOPCOCK
HDPE OR PP TRANSLUCENT, WITH PURPLE SCREW CAPS

Use for storing and dispensing solutions and media. Rectangular carboys feature a heavy-duty stainless steel handle for easy carrying and pouring. Carboys are leakproof on standard test conditions. Graduated to identify the volume dispensed. Stopcocks are tied to the handle and require hand assembly for use. No tools are necessary.

HDPE carboys

- These high-density polyethylene (HDPE), disposable carboys are ideal for storing and transfer of sterile fluids and pharmaceutical/biotech reagents
- Good for cold storage (down to -80 °C), working temperature of -80 to +120 °C
- High impact strength, even at negative temperatures
- Widely used for long storage due to high chemical resistance property
- Widely used in food and milk industries

PP carboys

- Ideal for sterile water storage, polypropylene carboys can be autoclaved before refilling to stop recurring bacterial growth.
- Excellent chemical resistance
- Working temperature: 0 to +135 °C
- Autoclavable

Note: Polypropylene carboys are autoclavable. HDPE carboys are not autoclavable. Always remove stopcock and cap from the carboy before autoclaving.

Resin meets US FDA 21 CFR, USP Class VI.



Ordering information:

| Capacity | Neck I-Ø (mm) | Thread (mm) | Pk | Cat. No. |
|-------------|---------------|-------------|----|----------|
| HDPE | | | | |
| 10 L | 85 | 100 | 1 | 216-1719 |
| 20 L | 83 | 100 | 1 | 216-1700 |
| PP | | | | |
| 10 L | 85 | 100 | 1 | 216-1735 |
| 20 L | 85 | 100 | 1 | 216-1732 |

| Description | Pk | Cat. No. |
|---|----|----------|
| Stopcock for VWR® carboys | | |
| Stopcock, with adapter for tubing connection and stopper for long storage for VWR carboys | 1 | 216-1745 |
| Spare caps for VWR® carboys | | |
| Cap for wide mouth VWR carboys | 1 | 216-1841 |

VWR®, CARBOYS, WIDE NECK, ROUND, WITH SCREW CAPS LDPE OR PP, TRANSLUCENT WITH PURPLE SCREW CAPS

Use for storing and dispensing solutions and media. Round carboys feature an integrated shoulder handle. Graduated to identify the volume dispensed.

LDPE carboys

- Ideal for high-purity applications, as they have high resistance to chemicals (widely used in ophthalmic products like eye droppers and nasal sprays).
- Preferred resin for cold storage (down to $-80\text{ }^{\circ}\text{C}$), working temperature -80 to $+80\text{ }^{\circ}\text{C}$
- Resistant to physical impacts (will not break even if it falls down accidentally, whereas PP carboys may lead to cracking at negative temperatures)
- LDPE product, will bounce back to their original shape as highly flexible material
- Widely used in pharma industries

PP carboys

- For sterile water storage, polypropylene (PP) carboys can be autoclaved before refilling to stop recurring bacterial growth.
- Excellent chemical resistance
- Working temperature 0 to $+135\text{ }^{\circ}\text{C}$
- Autoclavable

Resin meets US FDA 21 CFR, U SP Class VI.

Polypropylene carboys are autoclavable. LDPE carboys are not autoclavable. Always remove the spigot and cap from the carboy before autoclaving.



Ordering information:

| Capacity | Neck I-Ø (mm) | Thread (mm) | Pk | Cat. No. |
|---------------------|---------------|-------------|----|----------|
| LDPE carboys | | | | |
| 10 L | 85 | 100 | 1 | 216-1708 |
| 15 L | 85 | 100 | 1 | 216-1919 |
| PP carboys | | | | |
| 10 L | 83 | 100 | 1 | 216-1730 |
| 20 L | 83 | 100 | 1 | 216-1733 |

| Description | Pk | Cat. No. |
|---|----|----------|
| Stopcock for VWR® carboys | | |
| Stopcock, with adapter for tubing connection and stopper for long storage for VWR carboys | 1 | 216-1745 |
| Spare caps for VWR® carboys | | |
| Cap for wide mouth VWR carboys | 1 | 216-1841 |

 **avantor™**

VWR® Carboys Maximize storage & save space

- Large handles on top and molded handles on the base provide a secure grip top make lifting, carrying, and pouring easy
- Versatile caps offer the ultimate in connection flexibility

For more info visit in.vwr.com

VWR 

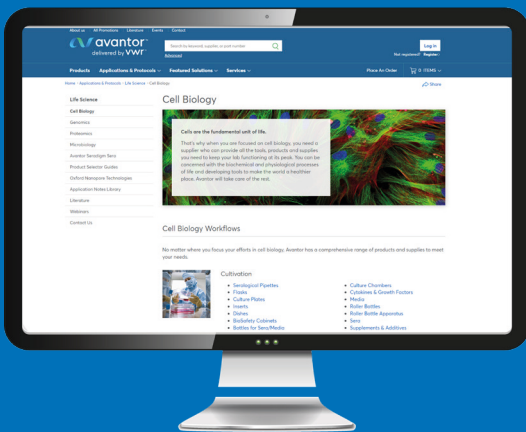


Cell culture

Getting accurate, consistent and reproducible results depends on having the cell culture products and equipment you need to do your job effectively. That's why VWR® carries your preferred products from brands you trust.

VWR® carries everything you need to conduct advanced, high-quality research from discovery to delivery. From cell culture plates and dishes to cell culture media, bottles, and flasks, we set your science in motion.

VISIT
IN.VWR.COM



IN.VWR.COM

Application & Protocols | Life sciences | Cell biology

VWR® Glassware

The quality of glass is an important element in the choice of your laboratory equipment, it must suit your work and your requirements. VWR offers a range of high quality joined glassware. Choose your glassware according to your needs.

WELCOME TO THE VWR® BRANDED RANGE OF GLASSWARE PRODUCTS

VWR glassware is produced from high quality borosilicate 3.3 glass which is due to its composition is characterized by excellent chemical resistance, high temperature resistance and very good resistance against thermal shock. Produced according to the international standard DIN ISO 3585 borosilicate 3.3 glass is therefore the ideal glass for mostly all laboratory applications. Chemical composition of VWR borosilicate 3.3 glass.

Product Range:

- Volumetric glassware
- Reagent Bottles
- Non- Volumetric glassware



VWR®, TRUE LABORATORY BOTTLES

Laboratory reagent bottles are made from clear Borosilicate 3.3 glass, with a pouring ring. Bottles are supplied with a polypropylene screw cap. Economical alternative for a wide range of laboratory applications. Round clear bottles feature graduations and are available with DIN GL32 or GL45 thread. Standard GL-thread and cap system for proper sealing and clean pouring, Retrace Code for manufacturing lot traceability.



Key features:

- Very good chemical resistance
- High temperature resistance
- Minimal thermal expansion; high resistance to temperature changes
- Easy-to-read graduation marks
- Ideal for long term storage

Ordering information:

| Description | UOM | Cat. No. |
|---|-----|--------------|
| Bottle reagent clear 25 ml with s. Cap | 10 | VWRA215-4436 |
| Bottle reagent clear 50 ml with s. Cap | 10 | VWRA215-4437 |
| Bottle reagent clear 100 ml with s. Cap | 10 | VWRA215-4438 |
| Bottle reagent clear 250 ml with s. Cap | 10 | VWRA215-4439 |
| Bottle reagent clear 500 ml with s. Cap | 10 | VWRA215-4440 |
| Bottle reagent clear 1 L with s. Cap | 6 | VWRA215-4441 |
| Bottle reagent clear 2 L with s. Cap | 2 | VWRA215-4442 |
| Bottle reagent clear 5 L with s. Cap | 1 | VWRA215-4443 |
| Bottle reagent clear 10 L with s. Cap | 1 | VWRA215-4444 |
| Bottle reagent clear 20 L with s. Cap | 1 | VWRA215-4445 |

Amber bottle

| Description | UOM | Pk | Cat. No. |
|---|-----|--------------|--------------|
| Bottle, reagent, SC, amb, 10 ml, gl 25 | 10 | 1 * 10 items | VWRA215-4639 |
| Bottle, reagent, SC, amb, 25 ml, gl 25 | 10 | 1 * 10 items | VWRA215-4640 |
| Bottle, reagent, SC, amb, 50 ml, gl 32 | 10 | 1 * 10 items | VWRA215-4641 |
| Bottle, reagent, SC, amb, 100 ml, gl 45 | 10 | 1 * 10 items | VWRA215-4642 |
| Bottle, reagent, SC, amb, 250 ml, gl 45 | 10 | 1 * 10 items | VWRA215-4643 |
| Bottle, reagent, SC, amb, 500 ml, gl 45 | 10 | 1 * 10 items | VWRA215-4644 |
| Bottle, reagent, SC, amb, 1000 ml, gl 45 | 6 | 1 * 6 items | VWRA215-4645 |
| Bottle, reagent, SC, amb, 2000 ml, gl 45 | 2 | 1 * 2 items | VWRA215-4646 |
| Bottle, reagent, SC, amb, 5000 ml, gl 45 | 1 | 1 * 1 items | VWRA215-4647 |
| Bottle, reagent, SC, amb, 10000 ml, gl 45 | 1 | 1 * 1 items | VWRA215-4648 |
| Bottle, reagent, SC, amb, 20000 ml, gl 45 | 1 | 1 * 1 items | VWRA215-4649 |

VWR®, VOLUMETRIC FLASKS, ISO

VOLUMETRIC FLASK CLEAR GLASS, WITH POLYPROPYLENE STOPPER, CLASS A

Key features:

- Calibrated at 27°C & 20°C
- Complies with ISO/USP Standard
- Calibrated to contain (TC, IN)
- Manufactured from 3.3 borosilicate glass for corrosion-free performance
- Printed in Blue color
- A calibration certificate is provided with each Individual certified product

Ordering information:

| Description | UOM | Cat. No. |
|--|-----|--------------|
| Volumetric flask, 1 ml, class A, ISO | 6 | VWRA612-6829 |
| Volumetric flask, 2 ml, Class A, ISO | 6 | VWRA612-6830 |
| Volumetric flask 5 ml, Class A, ISO | 2 | VWRA612-6831 |
| Volumetric flask 10 ml, class A ISO | 2 | VWRA612-6832 |
| Volumetric flask 20 ml, Class A ISO | 2 | VWRA612-6833 |
| Volumetric flask 25 ml, Class A ISO | 2 | VWRA612-6834 |
| Volumetric flask 50 ml, Class A, ISO | 2 | VWRA612-6835 |
| Volumetric flask 100 ml, Class A, ISO | 2 | VWRA612-6836 |
| Volumetric flask 200 ml, Class A, ISO | 2 | VWRA612-6837 |
| Volumetric flask 250 ml, Class A, ISO | 2 | VWRA612-6838 |
| Volumetric flask 500 ml, Class A, ISO | 2 | VWRA612-6839 |
| Volumetric flask 1000 ml, Class A, ISO | 2 | VWRA612-6840 |

Amber flask

| Description | Pk | Cat. No. |
|---|-------------|--------------|
| Flask vol. Amber, PP cap, cls A, 1 ml | 1 * 6 items | VWRA612-7207 |
| Flask vol. Amber, PP cap, cls A, 2 ml | 1 * 6 items | VWRA612-7208 |
| Flask vol. Amber, PP cap, cls A, 5 ml | 1 * 2 items | VWRA612-7209 |
| Flask vol. Amber, PP cap, cls A, 10 ml | 1 * 2 items | VWRA612-7210 |
| Flask vol. Amber, PP cap, cls A, 20 ml | 1 * 2 items | VWRA612-7211 |
| Flask vol. Amber, PP cap, cls A, 25 ml | 1 * 2 items | VWRA612-7220 |
| Flask vol. Amber, PP cap, cls A, 50 ml | 1 * 2 items | VWRA612-7230 |
| Flask vol. Amber, PP cap, cls A, 100 ml | 1 * 2 items | VWRA612-7231 |
| Flask vol. Amber, PP cap, cls A, 150 ml | 1 * 2 items | VWRA612-7232 |
| Flask vol. Amber, PP cap, cls A, 200 ml | 1 * 2 items | VWRA612-7233 |
| Flask vol. Amber, PP cap, cls A, 250 ml | 1 * 2 items | VWRA612-7234 |
| Flask vol. Amber, PP cap, cls A, 500 ml | 1 * 2 items | VWRA612-7235 |



| Description | UOM | Cat. No. |
|--|-----|--------------|
| Volumetric flask 2000 ml, Class A, ISO | 1 | VWRA612-6841 |
| Volumetric flask 5 ml, Class A, USP | 2 | VWRA612-6842 |
| Volumetric flask 10 ml, Class A, USP | 2 | VWRA612-6843 |
| Volumetric flask 25 ml, Class A USP | 2 | VWRA612-6844 |
| Volumetric flask 50 ml, Class A, USP | 2 | VWRA612-6845 |
| Volumetric flask 100 ml, Class A, USP | 2 | VWRA612-6846 |
| Volumetric flask 200 ml, Class A, USP | 2 | VWRA612-6847 |
| Volumetric flask 250 ml, Class A, USP | 2 | VWRA612-6848 |
| Volumetric flask 500 ml, Class A, USP | 2 | VWRA612-6849 |
| Volumetric flask 1000 ml, Class A, USP | 2 | VWRA612-6850 |
| Volumetric flask 2000 ml, Class A, USP | 1 | VWRA612-6851 |

| Description | Pk | Cat. No. |
|---|-------------|--------------|
| Flask vol. Amber, PP cap, cls A, 1000 ml | 1 * 2 items | VWRA612-7236 |
| Flask vol. Amber, PP cap, cls A, 2000 ml | 1 * 1 items | VWRA612-7237 |
| Flask vol. Amber, PP cap, cls A, 5000 ml | 1 * 1 items | VWRA612-7238 |
| Flask vol. Amb, PP cap cls A,usp, 10 ml | 1 * 2 items | VWRA612-7239 |
| Flask vol. Amb, PP cap cls A,usp, 25 ml | 1 * 2 items | VWRA612-7240 |
| Flask vol. Amb, PP cap cls A,usp, 50 ml | 1 * 2 items | VWRA612-7241 |
| Flask vol. Amb, PP cap cls A,usp, 50 ml | 1 * 2 items | VWRA612-7242 |
| Flask vol. Amb, PP cap cls A,usp, 100 ml | 1 * 2 items | VWRA612-7243 |
| Flask vol. Amb, PP cap cls A,usp, 200 ml | 1 * 2 items | VWRA612-7244 |
| Flask vol. Amb, PP cap cls A,usp, 250 ml | 1 * 2 items | VWRA612-7245 |
| Flask vol. Amb, PP cap cls A,usp, 500 ml | 1 * 2 items | VWRA612-7246 |
| Flask vol. Amb, PP cap cls A,usp, 1000 ml | 1 * 2 items | VWRA612-7247 |
| Flask vol. Amb, PP cap cls A,usp, 2000 ml | 1 * 1 items | VWRA612-7248 |

VWR®, VOLUMETRIC PIPETTES, ISO**BOROSILICATE GLASS PIPETTES**

VWR borosilicate glass pipettes are made from specially selected accurate bore glass tubing, have precision formed jets, bevel ground ends to resist chipping. The mouth piece of the pipettes is also tooled for easy sucking and cotton plugging.

Key features:

- Calibrated at 20 °C & 27°C
- Calibrated for delivery (TD, Ex)
- Generally used for accurate measurement and decanting of liquid
- Markings are made in permanent amber stain diffused into the surface of the glass for better visibility and durability

Each Pipette is calibrated to deliver (Ex, TD) at +20 °C reference temperature. The calibration also takes into account surface adhesion effects.

Certifications: Complies with ISO / DIN 648 Class A. A calibration certificate is provided with each Individual certified product.

**Ordering information:**

| Description | UOM | Cat. No. |
|---|-----|--------------|
| Pipette, Transfer, Volumetric, With One Mark, Class A With Individual Works Certificate, 1 ml | 10 | VWRA612-6875 |
| Pipette, Transfer, Volumetric, With One Mark, Class A With Individual Works Certificate, 2 ml | 10 | VWRA612-6876 |
| Pipette, Transfer, Volumetric, With One Mark, Class A With Individual Works Certificate, 3 ml | 10 | VWRA612-6877 |
| Pipette, Transfer, Volumetric, With One Mark, Class A With Individual Works Certificate, 4 ml | 10 | VWRA612-6878 |
| Pipette, Transfer, Volumetric, With One Mark, Class A With Individual Works Certificate, 5 ml | 10 | VWRA612-6879 |
| Pipette, Transfer, Volumetric, With One Mark, Class A With Individual Works Certificate, 6 ml | 10 | VWRA612-6880 |
| Pipette, Transfer, Volumetric, With One Mark, Class A With Individual Works Certificate, 7 ml | 10 | VWRA612-6881 |
| Pipette, Transfer, Volumetric, With One Mark, Class A With Individual Works Certificate, 8 ml | 10 | VWRA612-6882 |
| Pipette, Transfer, Volumetric, With One Mark, Class A With Individual Works Certificate, 9 ml | 10 | VWRA612-6883 |
| Pipette, Transfer, Volumetric, With One Mark, Class A With Individual Works Certificate, 10 ml | 10 | VWRA612-6884 |
| Pipette, Transfer, Volumetric, With One Mark, Class A With Individual Works Certificate, 15 ml | 10 | VWRA612-6885 |
| Pipette, Transfer, Volumetric, With One Mark, Class A With Individual Works Certificate, 20 ml | 10 | VWRA612-6886 |
| Pipette, Transfer, Volumetric, With One Mark, Class A With Individual Works Certificate, 25 ml | 10 | VWRA612-6887 |
| Pipette, Transfer, Volumetric, With One Mark, Class A With Individual Works Certificate, 50 ml | 10 | VWRA612-6888 |
| Pipette, Transfer, Volumetric, With One Mark, Class A With Individual Works Certificate, 100 ml | 4 | VWRA612-6889 |
| Volumetric Pipette With One Mark, Class A With NABL Certificate, 1 ml | 1 | VWRA612-6890 |
| Volumetric Pipette With One Mark, Class A With NABL Certificate, 2 ml | 1 | VWRA612-6891 |
| Volumetric Pipette With One Mark, Class A With NABL Certificate, 3 ml | 1 | VWRA612-6892 |
| Volumetric Pipette With One Mark, Class A With NABL Certificate, 4 ml | 1 | VWRA612-6893 |
| Volumetric Pipette With One Mark, Class A With NABL Certificate, 5 ml | 1 | VWRA612-6894 |
| Volumetric Pipette With One Mark, Class A With NABL Certificate, 6 ml | 1 | VWRA612-6895 |
| Volumetric Pipette With One Mark, Class A With NABL Certificate, 7 ml | 1 | VWRA612-6896 |
| Volumetric Pipette With One Mark, Class A With NABL Certificate, 8 ml | 1 | VWRA612-6897 |
| Volumetric Pipette With One Mark, Class A With NABL Certificate, 9 ml | 1 | VWRA612-6898 |
| Volumetric Pipette With One Mark, Class A With NABL Certificate, 10 ml | 1 | VWRA612-6899 |
| Volumetric Pipette With One Mark, Class A With NABL Certificate, 15 ml | 1 | VWRA612-6900 |
| Volumetric Pipette With One Mark, Class A With NABL Certificate, 20 ml | 1 | VWRA612-6913 |
| Volumetric Pipette With One Mark, Class A With NABL Certificate, 25 ml | 1 | VWRA612-6914 |
| Volumetric Pipette With One Mark, Class A With NABL Certificate, 50 ml | 1 | VWRA612-6915 |
| Volumetric Pipette With One Mark, Class A With NABL Certificate, 100 ml | 1 | VWRA612-6916 |
| Volumetric Pipette With One Mark, Class A With Individual USP Certificate, 1 ml | 10 | VWRA612-6917 |
| Volumetric Pipette With One Mark, Class A With Individual USP Certificate, 1.5 ml | 10 | VWRA612-6918 |
| Volumetric Pipette With One Mark, Class A With Individual USP Certificate, 2 ml | 10 | VWRA612-6919 |
| Volumetric Pipette With One Mark, Class A With Individual USP Certificate, 2.5 ml | 10 | VWRA612-6920 |
| Volumetric Pipette With One Mark, Class A With Individual USP Certificate, 3 ml | 10 | VWRA612-6935 |
| Volumetric Pipette With One Mark, Class A With Individual USP Certificate, 4 ml | 5 | VWRA612-6936 |
| Volumetric Pipette With One Mark, Class A With Individual USP Certificate, 5 ml | 5 | VWRA612-6937 |
| Volumetric Pipette With One Mark, Class A With Individual USP Certificate, 6 ml | 5 | VWRA612-6938 |
| Volumetric Pipette With One Mark, Class A With Individual USP Certificate, 7 ml | 5 | VWRA612-6939 |
| Volumetric Pipette With One Mark, Class A With Individual USP Certificate, 8 ml | 5 | VWRA612-6940 |
| Volumetric Pipette With One Mark, Class A With Individual USP Certificate, 9 ml | 5 | VWRA612-6941 |
| Volumetric Pipette With One Mark, Class A With Individual USP Certificate, 10 ml | 5 | VWRA612-6942 |
| Volumetric Pipette With One Mark, Class A With Individual USP Certificate, 15 ml | 5 | VWRA612-6943 |
| Volumetric Pipette With One Mark, Class A With Individual USP Certificate, 20 ml | 5 | VWRA612-6944 |
| Volumetric Pipette With One Mark, Class A With Individual USP Certificate, 25 ml | 5 | VWRA612-6945 |
| Volumetric Pipette With One Mark, Class A With Individual USP Certificate, 30 ml | 5 | VWRA612-6946 |
| Volumetric Pipette With One Mark, Class A With Individual USP Certificate, 40 ml | 5 | VWRA612-6947 |
| Volumetric Pipette With One Mark, Class A With Individual USP Certificate, 50 ml | 5 | VWRA612-6948 |
| Volumetric Pipette With One Mark, Class A With Individual USP Certificate, 100 ml | 2 | VWRA612-6949 |
| Volumetric Pipette With One Mark, Class B, 1 ml | 10 | VWRA612-6950 |
| Volumetric Pipette With One Mark, Class B, 2 ml | 10 | VWRA612-6951 |
| Volumetric Pipette With One Mark, Class B, 5 ml | 10 | VWRA612-6952 |

| Description | UOM | Cat. No. |
|---|-----|--------------|
| Volumetric Pipette With One Mark, Class B, 10 ml | 10 | VWRA612-6953 |
| Volumetric Pipette With One Mark, Class B, 20 ml | 10 | VWRA612-6954 |
| Volumetric Pipette With One Mark, Class B, 25 ml | 10 | VWRA612-6955 |
| Volumetric Pipette With One Mark, Class B, 50 ml | 10 | VWRA612-6956 |
| Volumetric Pipette With One Mark, Class B, 100 ml | 4 | VWRA612-6957 |
| Pipettes-ASTM, Transfer, Volumetric, with one Mark, Class B, 1 ml | 10 | VWRA612-6958 |
| Pipettes-ASTM, Transfer, Volumetric, with one Mark, Class B, 2 ml | 10 | VWRA612-6959 |
| Pipettes-ASTM, Transfer, Volumetric, with one Mark, Class B, 3 ml | 10 | VWRA612-6960 |
| Pipettes-ASTM, Transfer, Volumetric, with one Mark, Class B, 4 ml | 10 | VWRA612-6961 |
| Pipettes-ASTM, Transfer, Volumetric, with one Mark, Class B, 5 ml | 10 | VWRA612-6962 |
| Pipettes-ASTM, Transfer, Volumetric, with one Mark, Class B, 6 ml | 10 | VWRA612-6963 |
| Pipettes-ASTM, Transfer, Volumetric, with one Mark, Class B, 7 ml | 10 | VWRA612-6964 |
| Pipettes-ASTM, Transfer, Volumetric, with one Mark, Class B, 8 ml | 10 | VWRA612-6965 |
| Pipettes-ASTM, Transfer, Volumetric, with one Mark, Class B, 9 ml | 10 | VWRA612-6966 |
| Pipettes-ASTM, Transfer, Volumetric, with one Mark, Class B, 10 ml | 10 | VWRA612-6967 |
| Pipettes-ASTM, Transfer, Volumetric, with one Mark, Class B, 15 ml | 10 | VWRA612-6968 |
| Pipettes-ASTM, Transfer, Volumetric, with one Mark, Class B, 20 ml | 10 | VWRA612-6969 |
| Pipettes-ASTM, Transfer, Volumetric, with one Mark, Class B, 25 ml | 10 | VWRA612-6970 |
| Pipettes-ASTM, Transfer, Volumetric, with one Mark, Class B, 30 ml | 10 | VWRA612-6971 |
| Pipettes-ASTM, Transfer, Volumetric, with one Mark, Class B, 40 ml | 10 | VWRA612-6972 |
| Pipettes-ASTM, Transfer, Volumetric, with one Mark, Class B, 50 ml | 10 | VWRA612-6973 |
| Pipettes-ASTM, Transfer, Volumetric, with one Mark, Class B, 100 ml | 4 | VWRA612-6974 |
| Pipette, Graduated, Mohr Type Class A, 0.1 ml | 10 | VWRA612-6975 |
| Pipette, Graduated, Mohr Type Class A, 0.2 ml | 10 | VWRA612-6976 |
| Pipette, Graduated, Mohr Type Class A, 1 ml | 10 | VWRA612-6977 |
| Pipette, Graduated, Mohr Type Class A, (Sub 0.1) 1 ml | 10 | VWRA612-6978 |
| Pipette, Graduated, Mohr Type Class A, 2 ml | 10 | VWRA612-6979 |
| Pipette, Graduated, Mohr Type Class A, (Sub 0.1) 2 ml | 10 | VWRA612-6980 |
| Pipette, Graduated, Mohr Type Class A, 5 ml | 10 | VWRA612-6981 |
| Pipette, Graduated, Mohr Type Class A, (Sub 0.1) 5 ml | 10 | VWRA612-6982 |
| Pipette, Graduated, Mohr Type Class A, 10 ml | 10 | VWRA612-6983 |
| Pipette, Graduated, Mohr Type Class A, 25 ml | 10 | VWRA612-6984 |
| Pipette, Graduated, Mohr Type, Cass A with NABL Certificate, 0.1 ml | 1 | VWRA612-6985 |
| Pipette, Graduated, Mohr Type, Cass A with NABL Certificate, 0.2 ml | 1 | VWRA612-6986 |
| Pipette, Graduated, Mohr Type, Cass A with NABL Certificate, 1 ml (Sub 0.01) | 1 | VWRA612-6987 |
| Pipette, Graduated, Mohr Type, Cass A with NABL Certificate, 1 ml (Sub 0.1) | 1 | VWRA612-6988 |
| Pipette, Graduated, Mohr Type, Cass A with NABL Certificate, 2 ml (Sub 0.02) | 1 | VWRA612-6989 |
| Pipette, Graduated, Mohr Type, Cass A with NABL Certificate, 2 ml (Sub 0.1) | 1 | VWRA612-6990 |
| Pipette, Graduated, Mohr Type, Cass A with NABL Certificate, 5 ml (Sub 0.05) | 1 | VWRA612-6991 |
| Pipette, Graduated, Mohr Type, Cass A with NABL Certificate, 5 ml (Sub 0.1) | 1 | VWRA612-6992 |
| Pipette, Graduated, Mohr Type, Cass A with NABL Certificate, 10 ml | 1 | VWRA612-6993 |
| Pipette, Graduated, Mohr Type, Cass A with NABL Certificate, 25 ml | 1 | VWRA612-6994 |
| Pipette, Graduated, Mohr Type Class B, 0.1 ml | 10 | VWRA612-6995 |
| Pipette, Graduated, Mohr Type Class B, 0.2 ml | 10 | VWRA612-6996 |
| Pipette, Graduated, Mohr Type Class B, (Sub 0.01) 1 ml | 10 | VWRA612-6997 |
| Pipette, Graduated, Mohr Type Class B, (Sub 0.1) 1 ml | 10 | VWRA612-6998 |
| Pipette, Graduated, Mohr Type Class B, (Sub 0.02) 2 ml | 10 | VWRA612-6999 |
| Pipette, Graduated, Mohr Type Class B, (Sub 0.1) 2 ml | 10 | VWRA612-7000 |
| Pipette, Graduated, Mohr Type Class B, (Sub 0.05) 2 ml | 10 | VWRA612-7008 |
| Pipette, Graduated, Mohr Type Class B, (Sub 0.1) 5 ml | 10 | VWRA612-7009 |
| Pipette, Graduated, Mohr Type Class B, 10 ml | 10 | VWRA612-7010 |
| Pipette, Graduated, Mohr Type Class B, 25 ml | 10 | VWRA612-7011 |
| Pipette, Graduated, Serological, Class A, 0.1 ml | 10 | VWRA612-7012 |
| Pipette, Graduated, Serological, Class A, 0.2 ml | 10 | VWRA612-7013 |
| Pipette, Graduated, Serological, Class A, (Sub 0.01) 1 ml | 10 | VWRA612-7015 |
| Pipette, Graduated, Serological, Class A, (Sub 0.1) 1 ml | 10 | VWRA612-7016 |
| Pipette, Graduated, Serological, Class A, (Sub 0.02) 2 ml | 10 | VWRA612-7017 |
| Pipette, Graduated, Serological, Class A, (Sub 0.1) 2 ml | 10 | VWRA612-7018 |
| Pipette, Graduated, Serological, Class A, (Sub 0.05) 5 ml | 10 | VWRA612-7019 |
| Pipette, Graduated, Serological, Class A, (Sub 0.1) 5 ml | 10 | VWRA612-7020 |
| Pipette, Graduated, Serological, Class A, 10 ml | 10 | VWRA612-7021 |
| Pipette, Graduated, Serological, Class A, 25 ml | 10 | VWRA612-7022 |
| Pipette, Graduated, Serological, Class A with NABL Certificate, 0.1 ml | 1 | VWRA612-7023 |
| Pipette, Graduated, Serological, Class A with NABL Certificate, 0.2 ml | 1 | VWRA612-7024 |
| Pipette, Graduated, Serological, Class A with NABL Certificate, 1 ml (Sub 0.01) | 1 | VWRA612-7025 |
| Pipette, Graduated, Serological, Class A with NABL Certificate, 1 ml (Sub 0.1) | 1 | VWRA612-7026 |
| Pipette, Graduated, Serological, Class A with NABL Certificate, 2 ml (Sub 0.02) | 1 | VWRA612-7027 |
| Pipette, Graduated, Serological, Class A with NABL Certificate, 2 ml (Sub 0.1) | 1 | VWRA612-7028 |
| Pipette, Graduated, Serological, Class A with NABL Certificate, 5 ml (Sub 0.05) | 1 | VWRA612-7029 |
| Pipette, Graduated, Serological, Class A with NABL Certificate, 5 ml (Sub 0.1) | 1 | VWRA612-7030 |
| Pipette, Graduated, Serological, Class A with NABL Certificate, 10 ml | 1 | VWRA612-7031 |
| Pipette, Graduated, Serological, Class A with NABL Certificate, 25 ml | 1 | VWRA612-7032 |
| Pipettes, Serological, Class A With Individual USP Certificate, 0.1 ml | 10 | VWRA612-7033 |
| Pipettes, Serological, Class A With Individual USP Certificate, 0.2 ml | 10 | VWRA612-7039 |
| Pipettes, Serological, Class A With Individual USP Certificate, 1 ml | 10 | VWRA612-7040 |
| Pipettes, Serological, Class A With Individual USP Certificate, 2 ml | 10 | VWRA612-7041 |
| Pipettes, Serological, Class A With Individual USP Certificate, 5 ml | 10 | VWRA612-7042 |
| Pipettes, Serological, Class A With Individual USP Certificate, 10 ml | 10 | VWRA612-7043 |
| Pipettes, Serological, Class A With Individual USP Certificate, 25 ml | 10 | VWRA612-7044 |

VWR®, MEASURING CYLINDERS, BOROSILICATE

Key features:

- Borosilicate glass, tall form, class A.
- Calibrated to contain (TC, In)
- Hexagonal glass base, with spout
- Blue graduations with ring marks at major graduations
- Certificate of conformity with batch number
- Certifications: DIN 12680



Ordering information:

| Description | UOM | Cat. No. |
|--|-----|--------------|
| Measuring Cylinder, Hex. Base, Class A , 5 ml | 2 | VWRA612-7045 |
| Measuring Cylinder, Hex. Base, Class A , 10 ml | 2 | VWRA612-7046 |
| Measuring Cylinder, Hex. Base, Class A , 25 ml | 2 | VWRA612-7047 |
| Measuring Cylinder, Hex. Base, Class A , 50 ml | 2 | VWRA612-7048 |
| Measuring Cylinder, Hex. Base, Class A , 100 ml | 2 | VWRA612-7049 |
| Measuring Cylinder, Hex. Base, Class A , 250 ml | 2 | VWRA612-7050 |
| Measuring Cylinder, Hex. Base, Class A , 500 ml | 2 | VWRA612-7051 |
| Measuring Cylinder, Hex. Base, Class A , 1000 ml | 1 | VWRA612-7052 |
| Measuring Cylinder, Hex. Base, Class A , 2000 ml | 1 | VWRA612-7053 |
| Measuring Cylinder, Hex. Base Class B, 5 ml | 2 | VWRA612-7054 |
| Measuring Cylinder, Hex. Base Class B, 10 ml | 2 | VWRA612-7056 |
| Measuring Cylinder, Hex. Base Class B, 25 ml | 2 | VWRA612-7057 |
| Measuring Cylinder, Hex. Base Class B, 50 ml | 2 | VWRA612-7058 |
| Measuring Cylinder, Hex. Base Class B, 100 ml | 2 | VWRA612-7059 |
| Measuring Cylinder, Hex. Base Class B, 250 ml | 2 | VWRA612-7060 |
| Measuring Cylinder, Hex. Base Class B, 500 ml | 2 | VWRA612-7068 |
| Measuring Cylinder, Hex. Base Class B, 1000 ml | 1 | VWRA612-7069 |
| Measuring Cylinder, Hex. Base Class B, 2000 ml | 1 | VWRA612-7071 |
| Measuring Cylinders,With Stopper, Hex. Base Class A , 5 ml | 2 | VWRA612-7072 |
| Measuring Cylinders,With Stopper, Hex. Base Class A , 10 ml | 2 | VWRA612-7073 |
| Measuring Cylinders,With Stopper, Hex. Base Class A , 25 ml | 2 | VWRA612-7074 |
| Measuring Cylinders, With Stopper, Hex. Base Class A , 50 ml | 2 | VWRA612-7075 |
| Measuring Cylinders,With Stopper, Hex. Base Class A , 100 ml | 2 | VWRA612-7076 |
| Measuring Cylinders,With Stopper, Hex. Base Class A , 250 ml | 2 | VWRA612-7077 |
| Measuring Cylinders, With Stopper, Hex. Base Class A , 500 ml | 2 | VWRA612-7078 |
| Measuring Cylinders, With Stopper, Hex. Base Class A , 1000 ml | 1 | VWRA612-7079 |
| Measuring Cylinders,With Stopper, Hex. Base Class A , 2000 ml | 1 | VWRA612-7089 |
| Measuring Cylinders,With Stopper, Hex. Base, Class B, 5 ml | 2 | VWRA612-7090 |
| Measuring Cylinders,With Stopper, Hex. Base, Class B, 10 ml | 2 | VWRA612-7094 |
| Measuring Cylinders, With Stopper, Hex. Base, Class B, 25 ml | 2 | VWRA612-7098 |
| Measuring Cylinders, With Stopper, Hex. Base, Class B, 50 ml | 2 | VWRA612-7099 |
| Measuring Cylinders, With Stopper, Hex. Base, Class B, 100 ml | 2 | VWRA612-7100 |
| Measuring Cylinders, With Stopper, Hex. Base, Class B, 250 ml | 2 | VWRA612-7101 |
| Measuring Cylinders, With Stopper, Hex. Base, Class B, 500 ml | 2 | VWRA612-7102 |
| Measuring Cylinders, With Stopper, Hex. Base, Class B, 1000 ml | 1 | VWRA612-7103 |
| Measuring Cylinders, With Stopper, Hex. Base, Class B, 2000 ml | 1 | VWRA612-7104 |

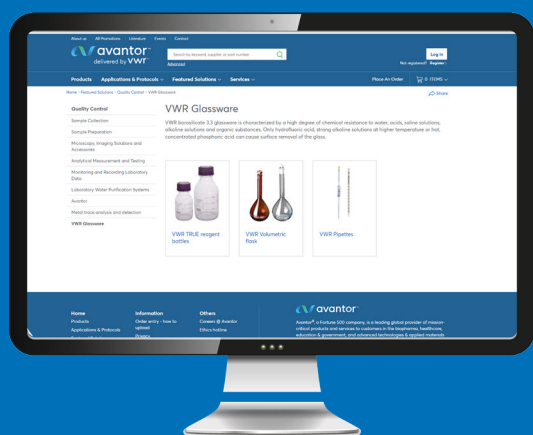
Glassware

The quality of glass is an important element in the choice of your laboratory equipment, it must suit your work and your requirements.

VWR offers a range of high quality joined glassware.

Choose your glassware according to your needs.

VISIT
IN.VWR.COM



IN.VWR.COM

Featured Solutions | Quality control | Glassware

VWR Lab Supplies mobile app

An e-Commerce application that provides a light-weight alternative to browsing and purchasing directly from VWR.com in India

A complete system for a modern laboratory!

SEARCHING PRODUCTS

- Search products with barcode scanning with your device's camera
- Search via Google Assistant & Siri
- Recently Viewed Products: Customers can easily and directly get back to the items they were looking for in the app.

FLEXIBILITY

- Offers the ability to see applicable 'rate contract price' while browsing through products
- View the product with account specific pricing & place your order directly on the app

CUSTOMIZATION

- Customers can save their favorite products in app for an easy search
- Buy again: Customer can pick-and-click products from post orders in their cart functionality
- Ability to reorder at the touch of a button



Scan & Explore
in.vwr.com

